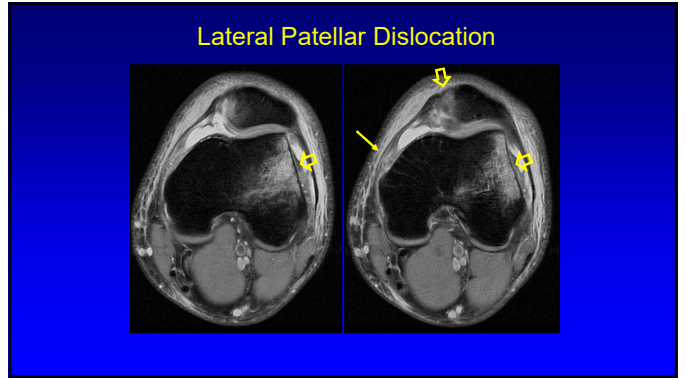
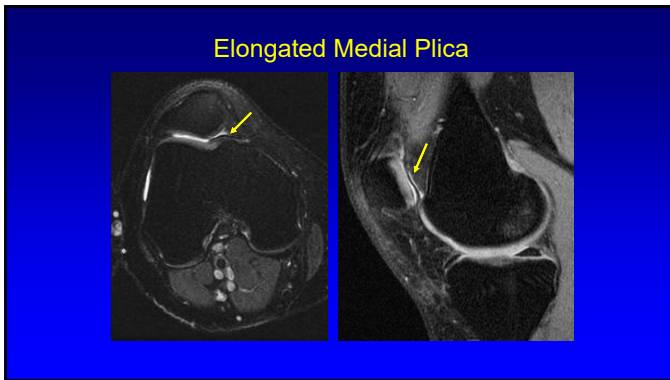


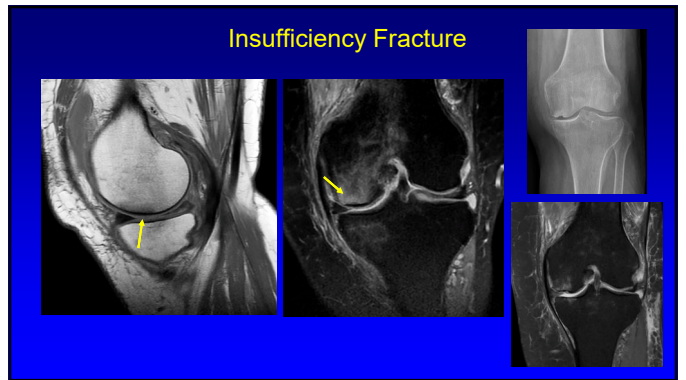
101



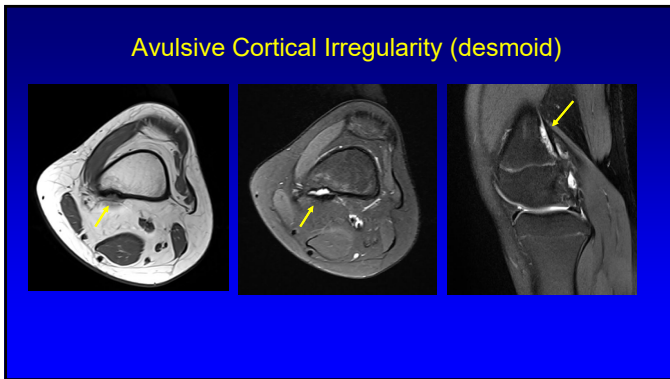
102



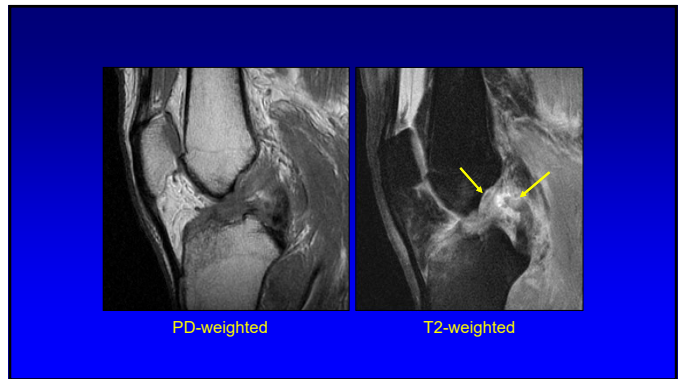
103



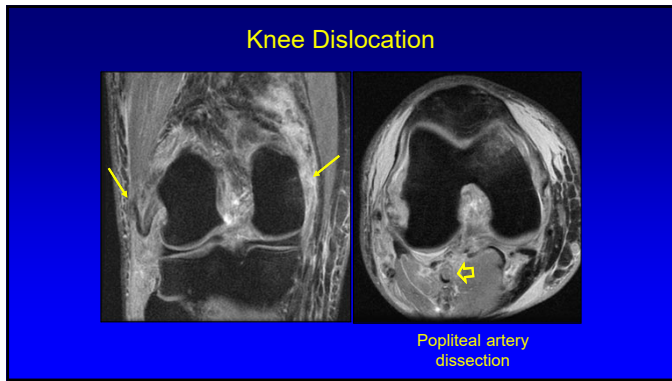
104



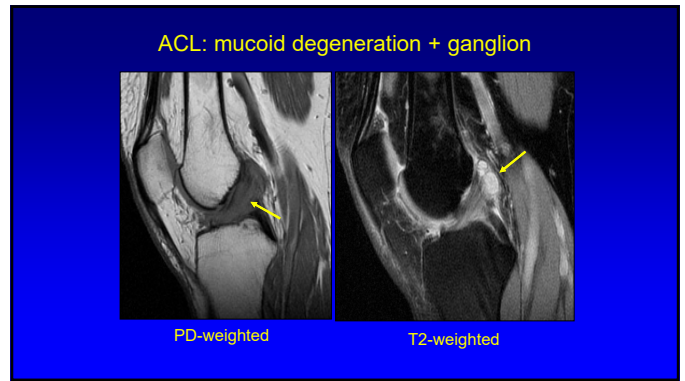
105



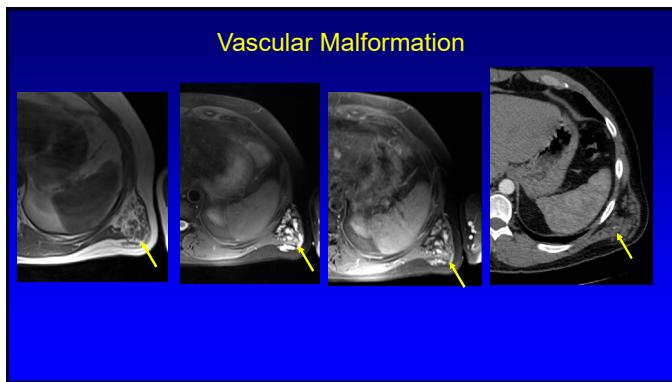
106



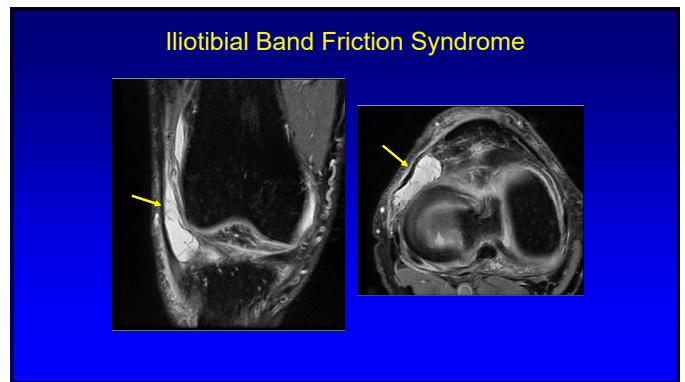
107



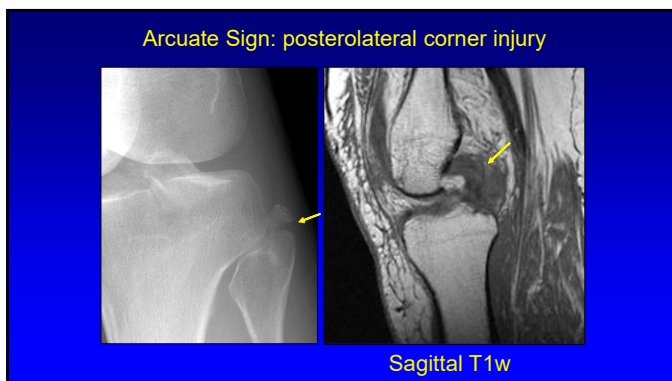
108



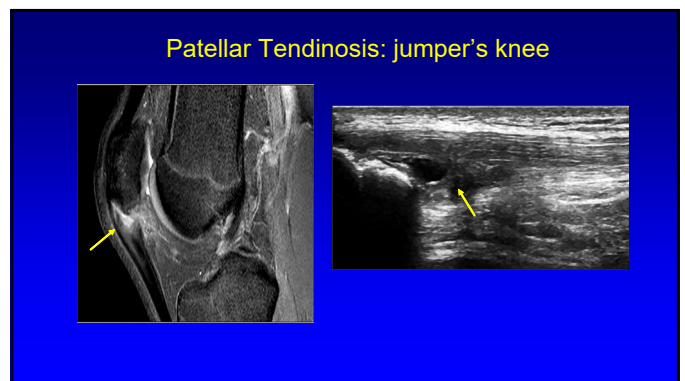
109



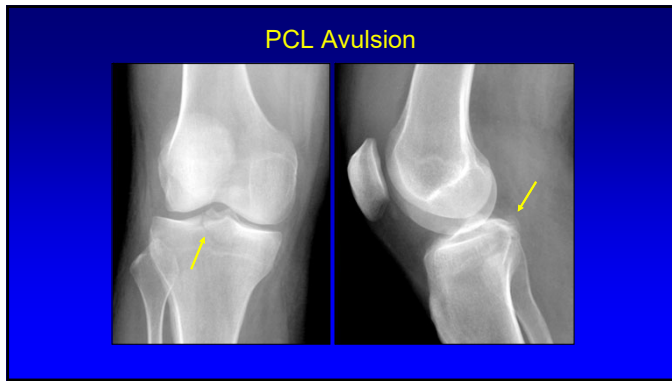
110



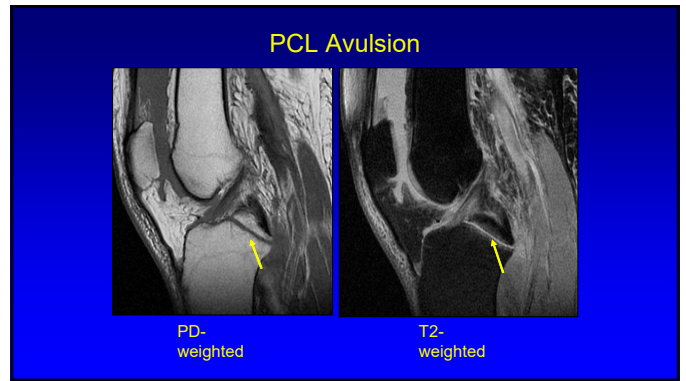
111



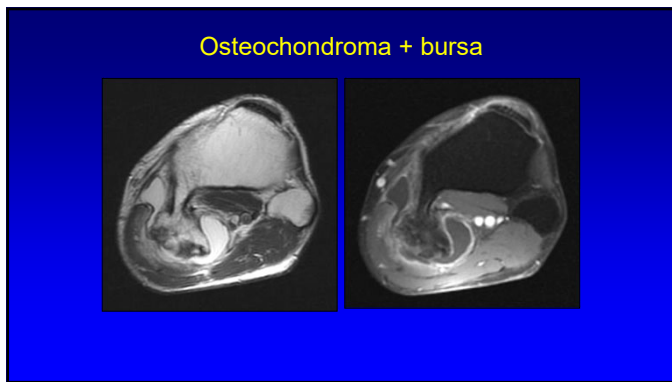
112



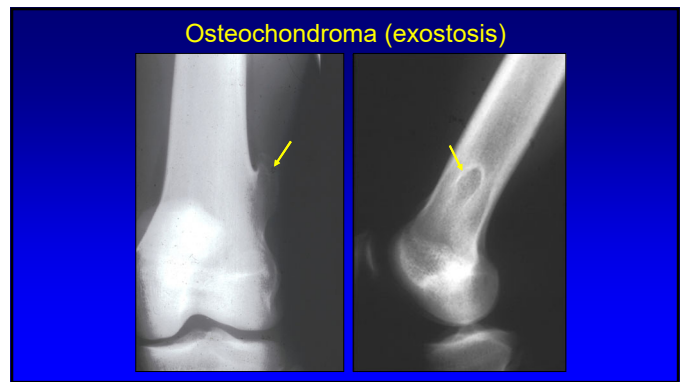
113



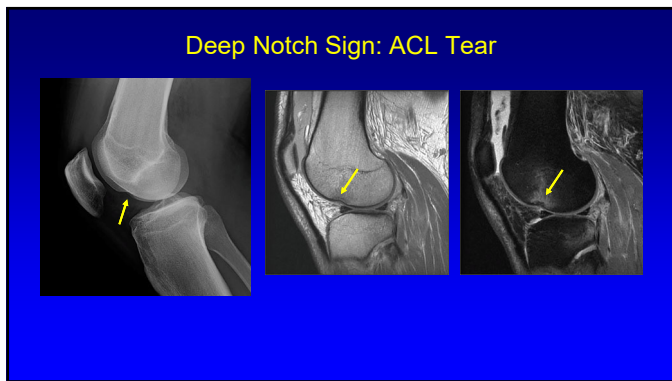
114



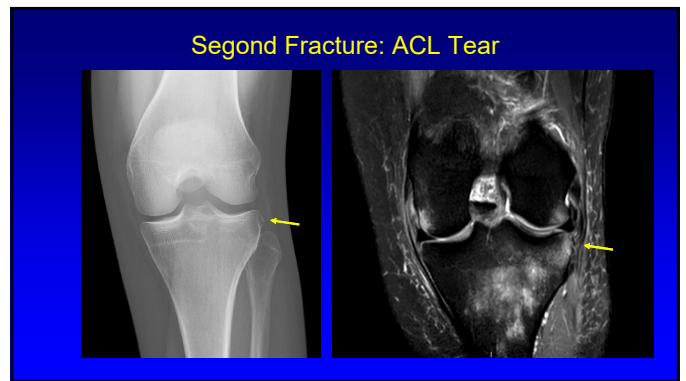
115



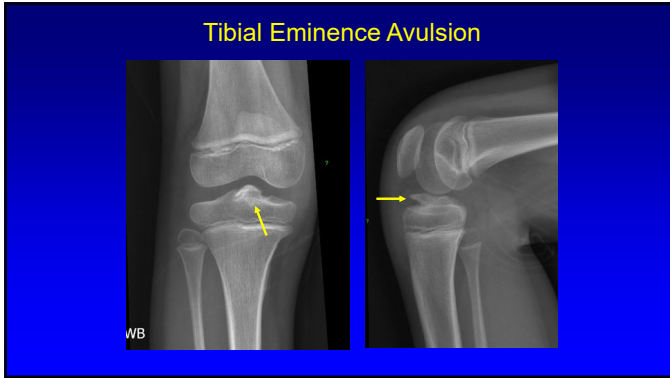
116



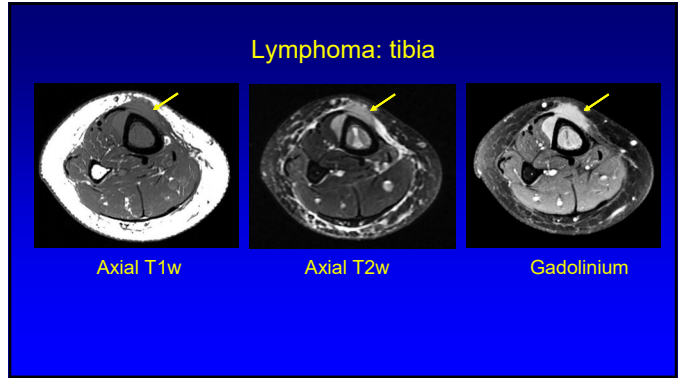
117



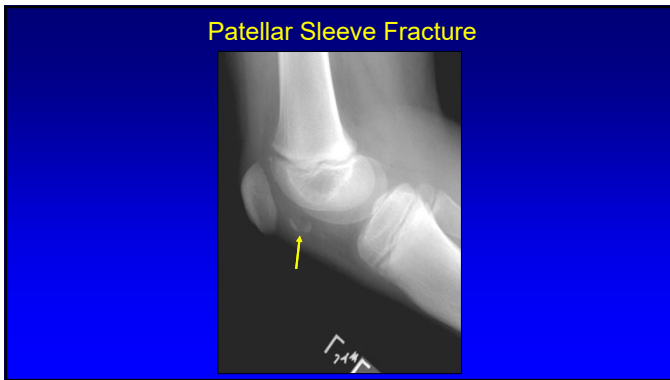
118



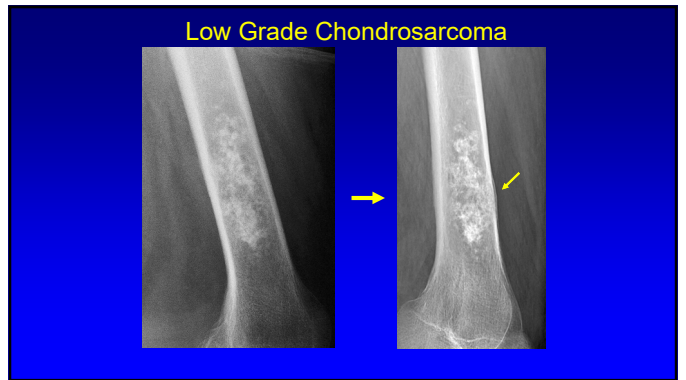
119



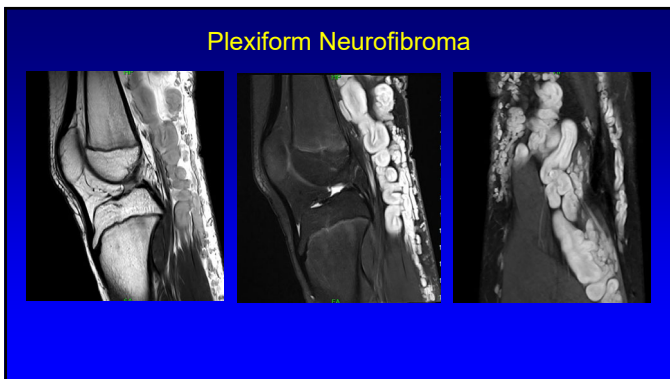
120



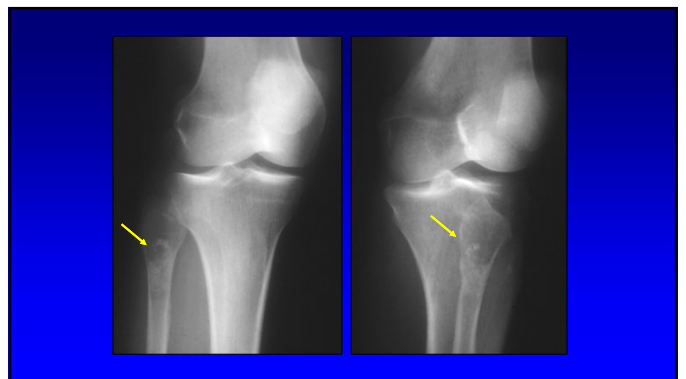
121



122



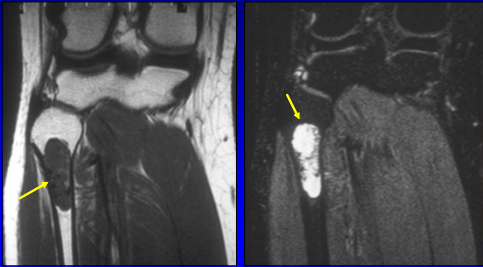
123



124

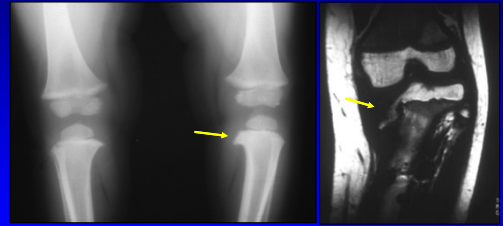


Low-grade Chondrosarcoma



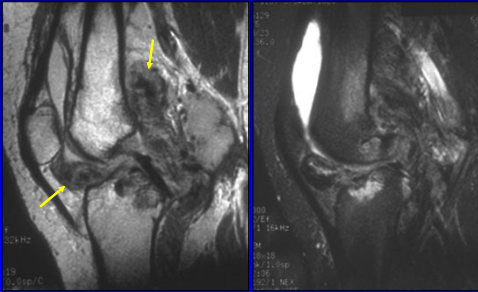
125

Bout Disease: tibia vara



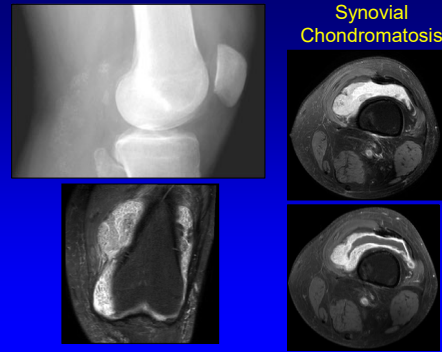
126

Pigmented Villonodular Synovitis



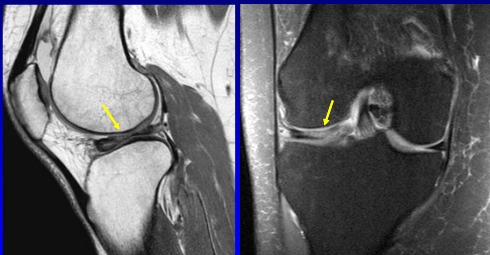
127

Synovial Chondromatosis



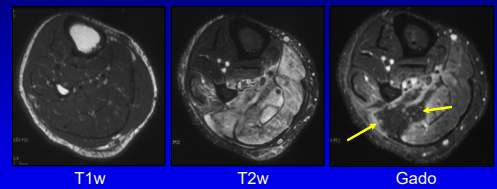
128

Discoid Meniscus + Tear: lateral

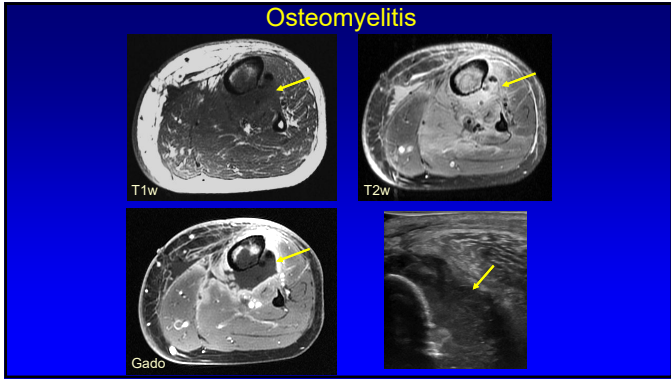


129

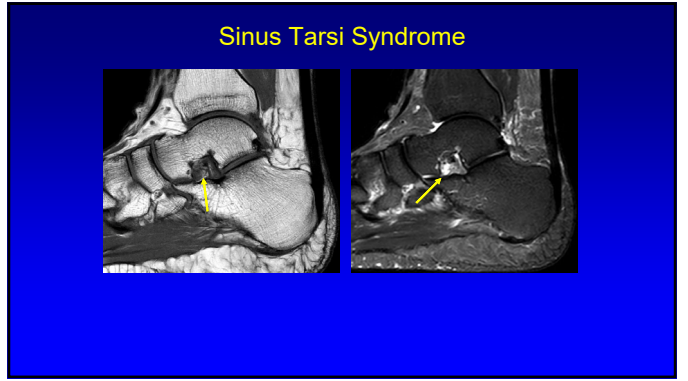
Diabetic Muscle Infarction



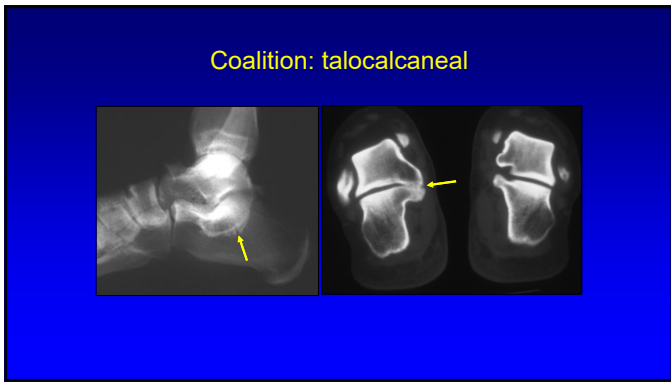
130



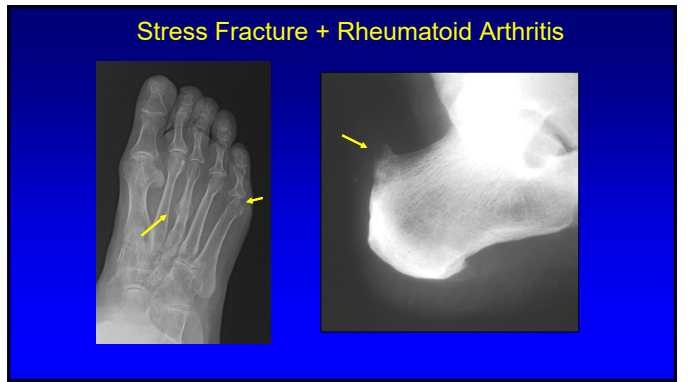
131



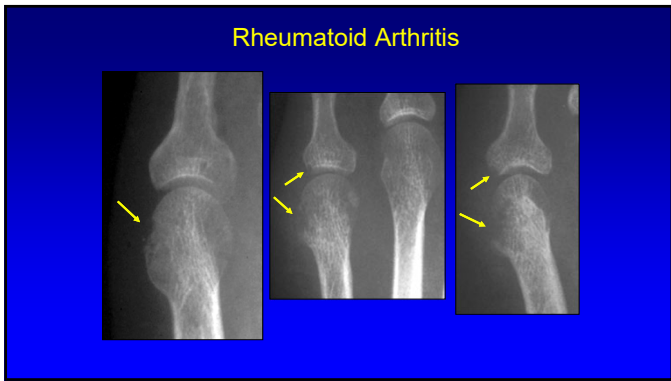
132



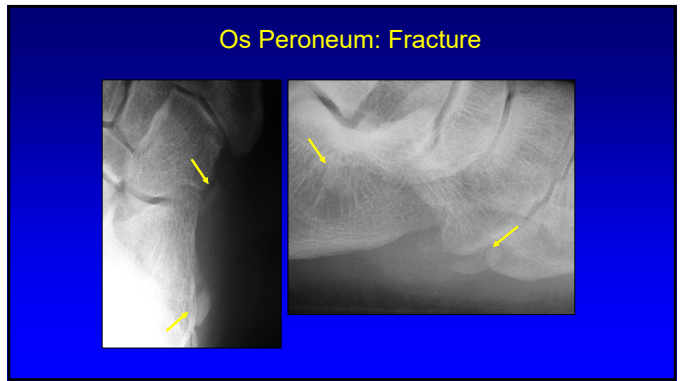
133



134

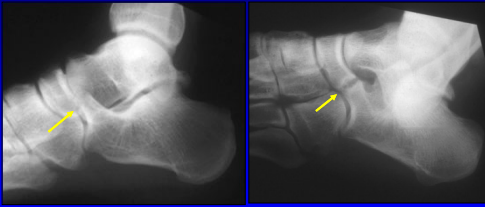


135



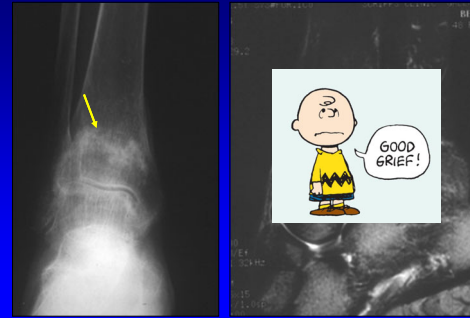
136

Coalition: calcaneonavicular



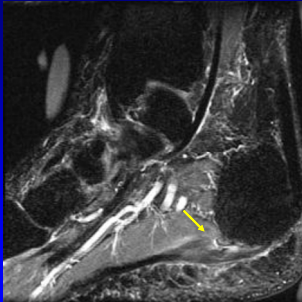
137

Insufficiency Fracture



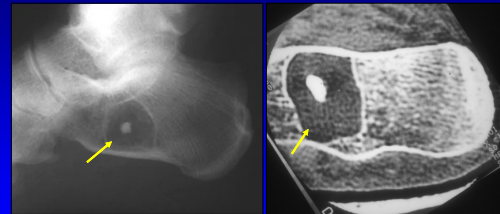
138

Plantar Fasciopathy



139

Intra-osseous Lipoma



140

Fatigue Fracture: Navicular

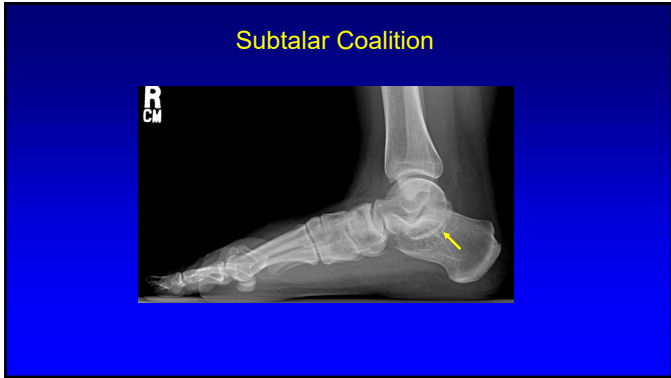


141

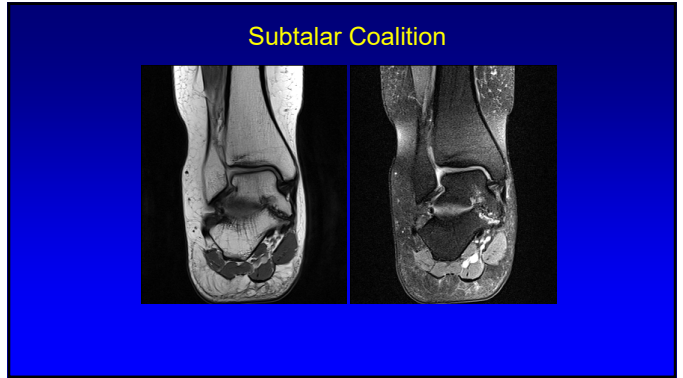
Hemophilia



142



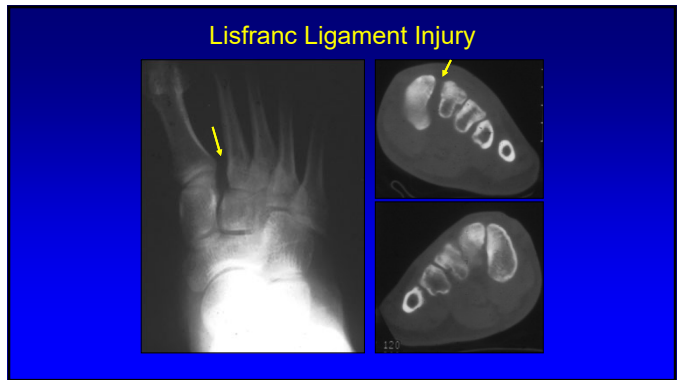
143



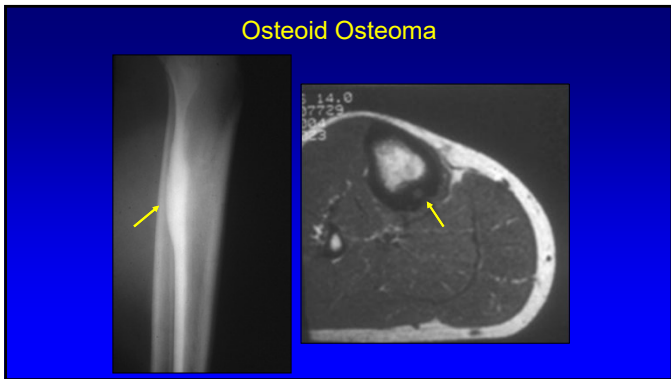
144



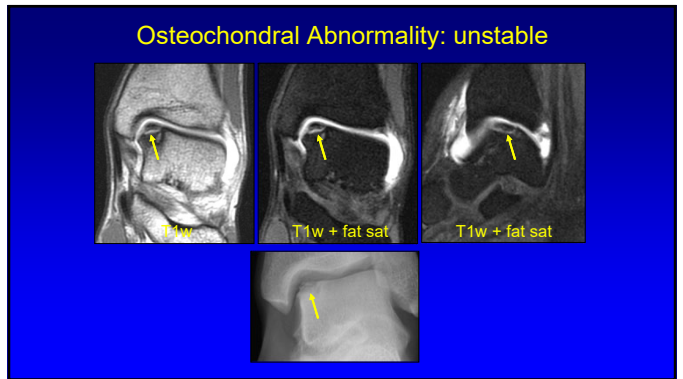
145



146

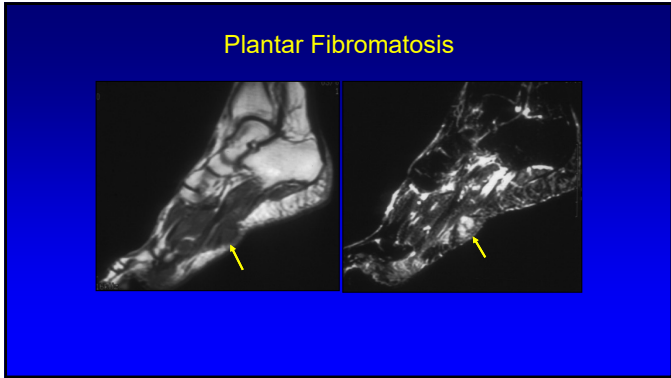


147

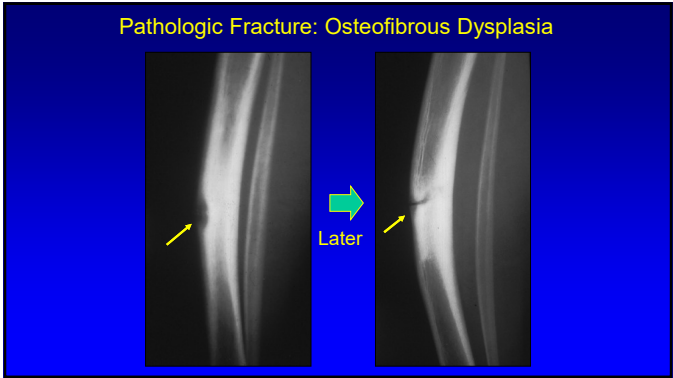


148

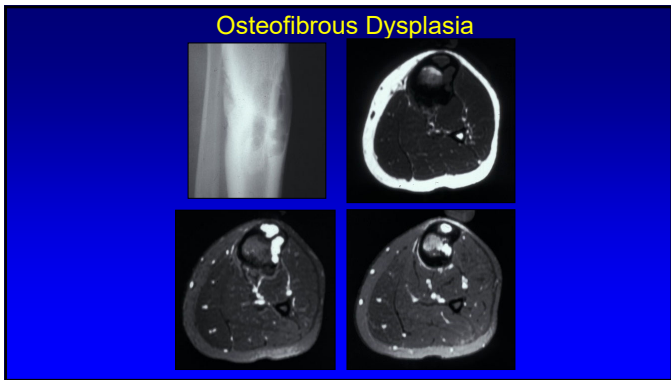




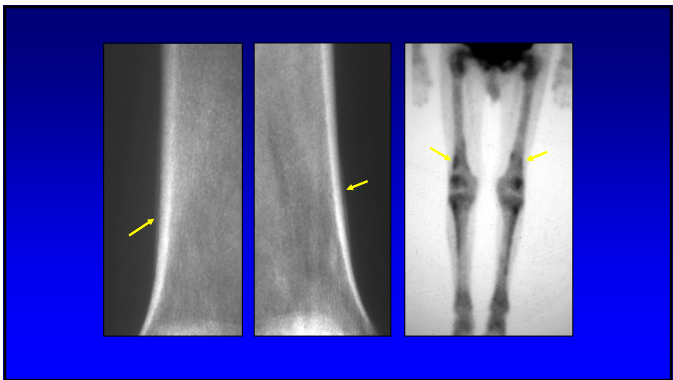
149



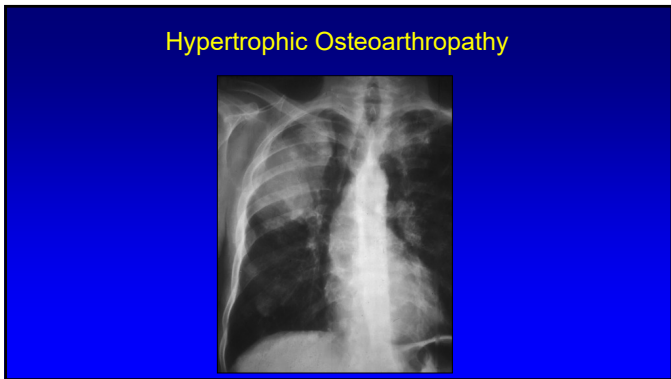
150



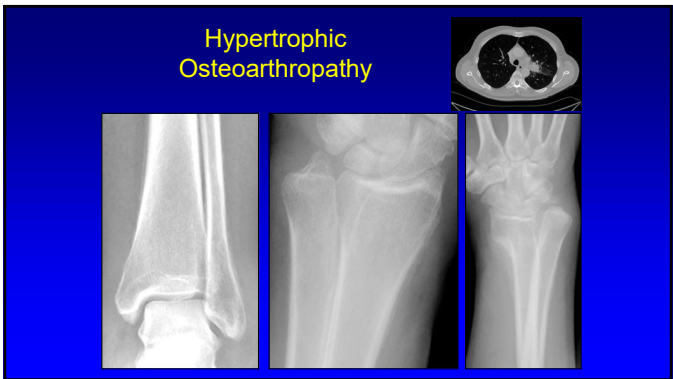
151



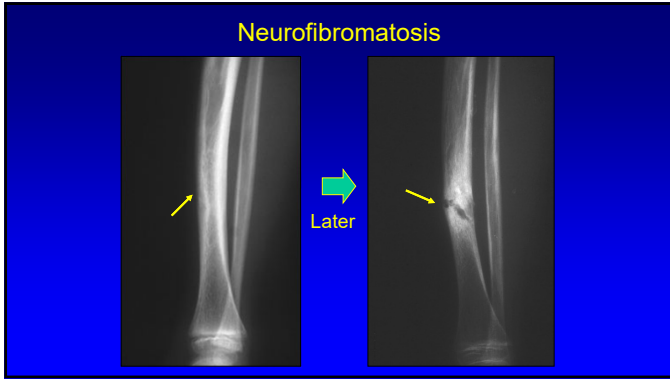
152



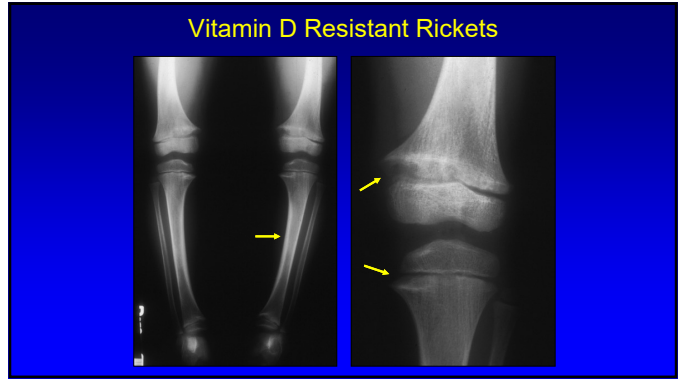
153



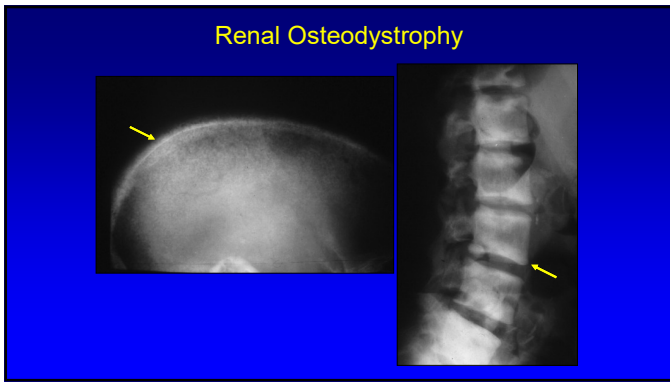
154



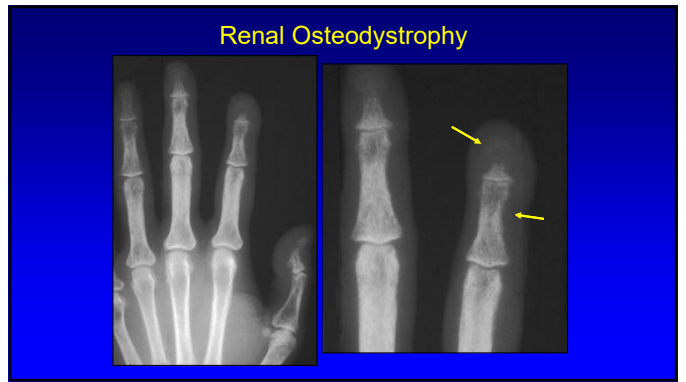
155



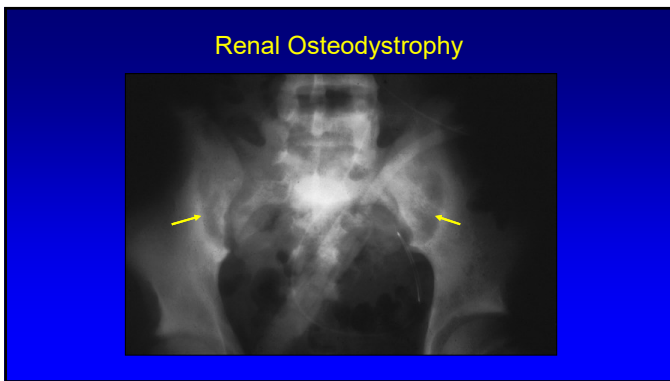
156



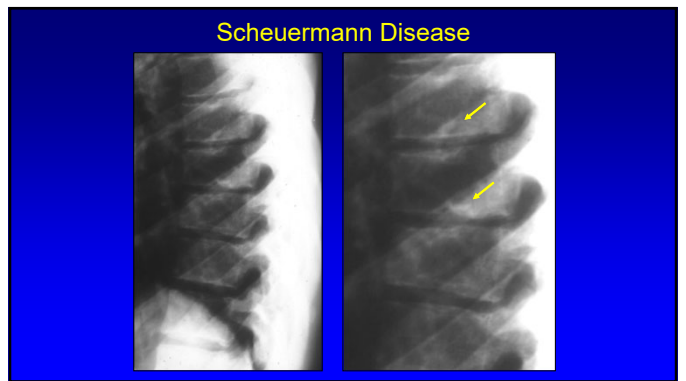
157



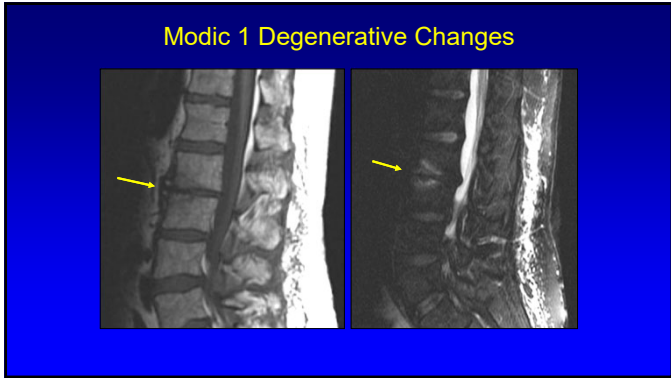
158



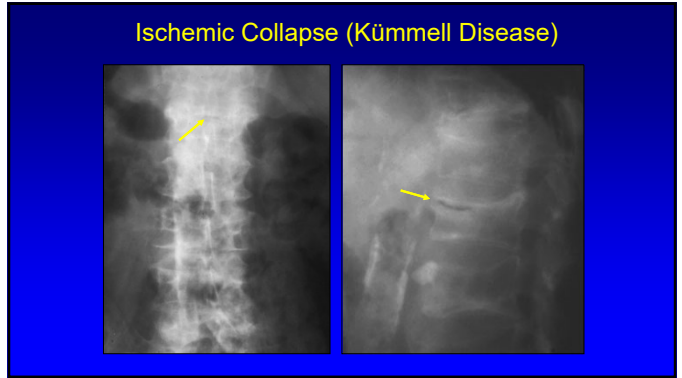
159



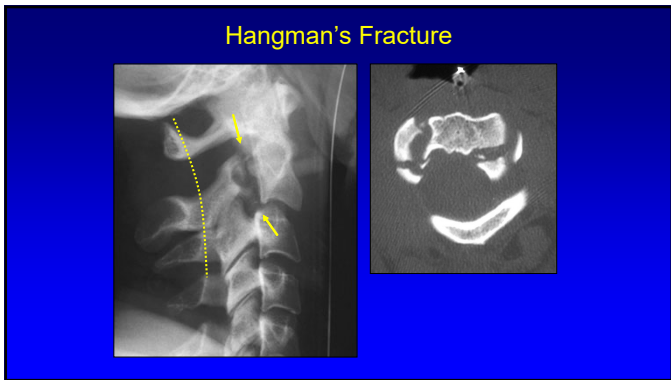
160



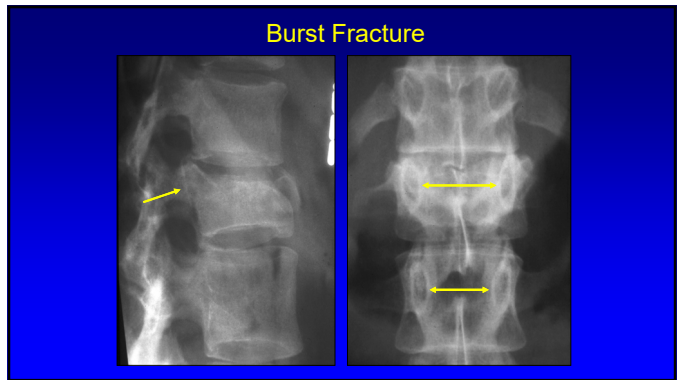
161



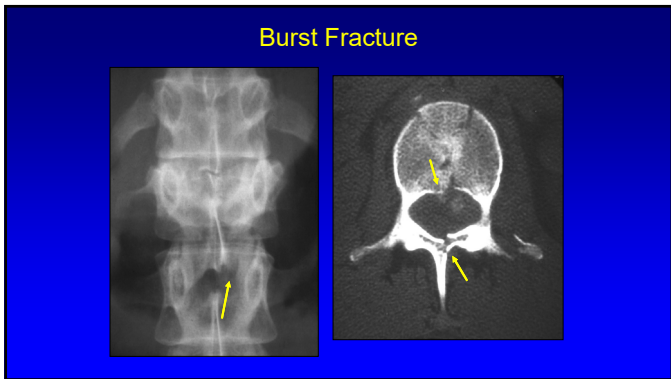
162



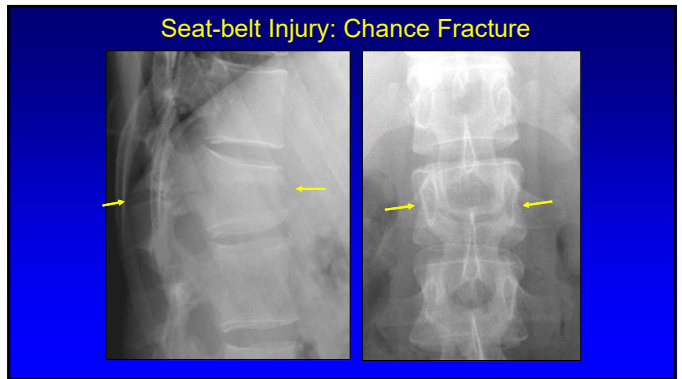
163



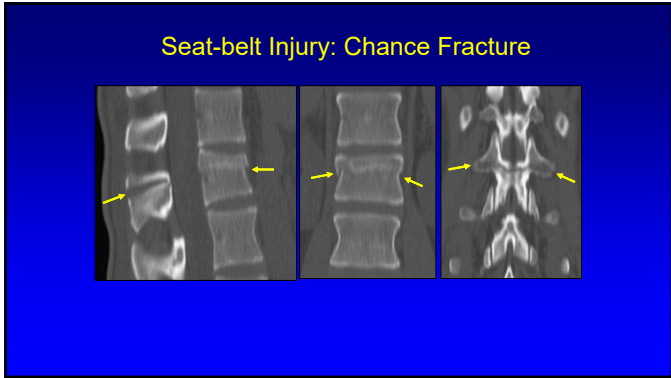
164



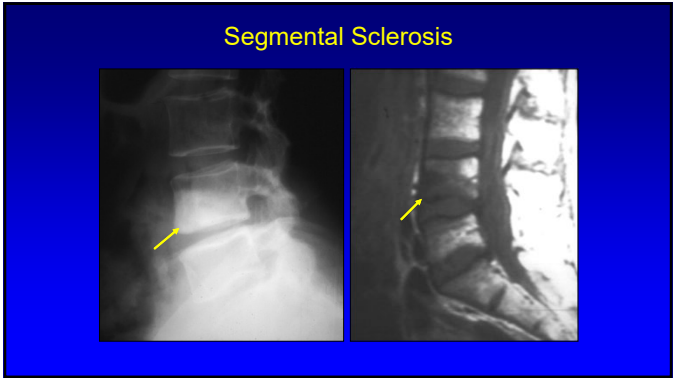
165



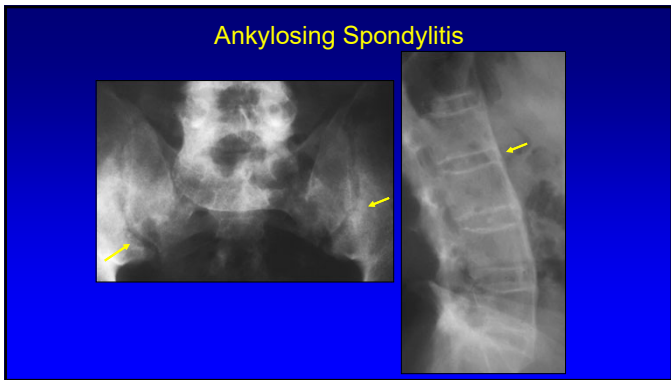
166



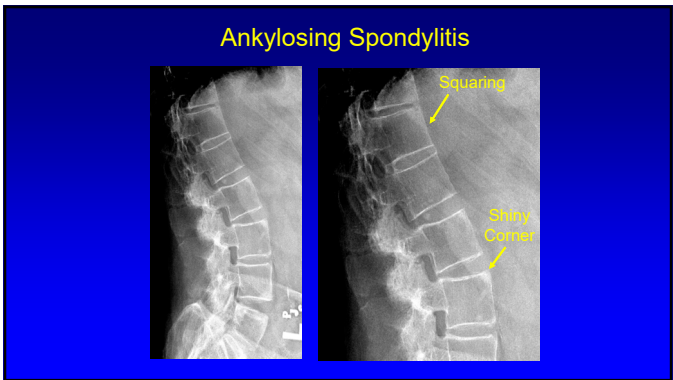
167



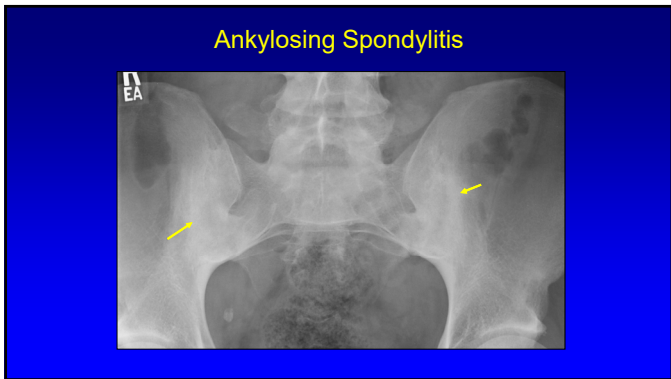
168



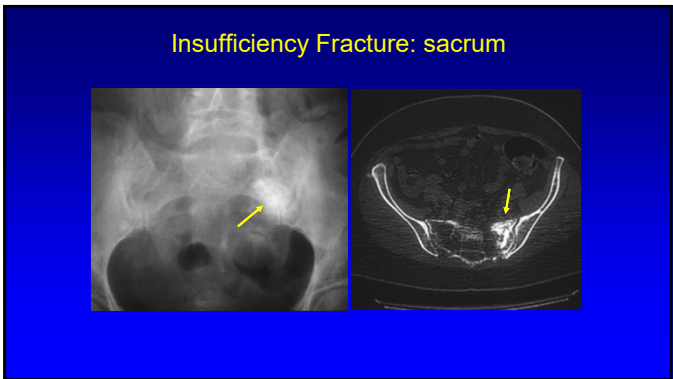
169



170

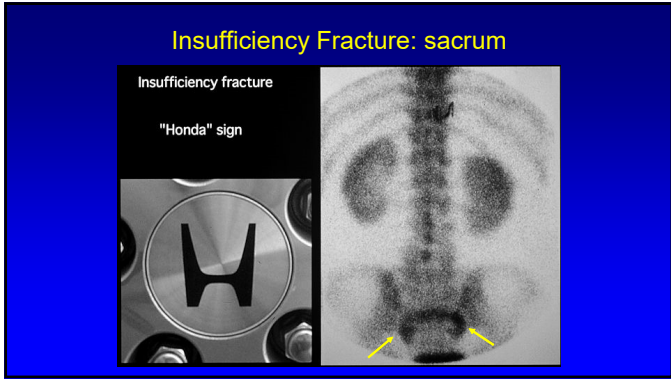


171

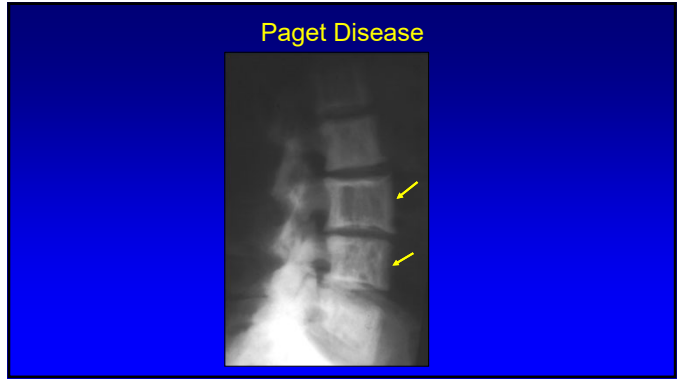


172

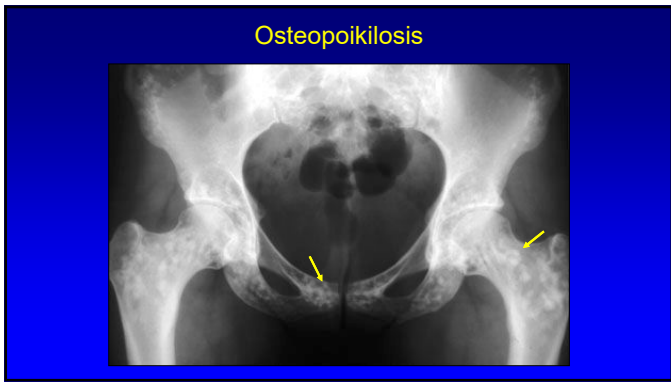




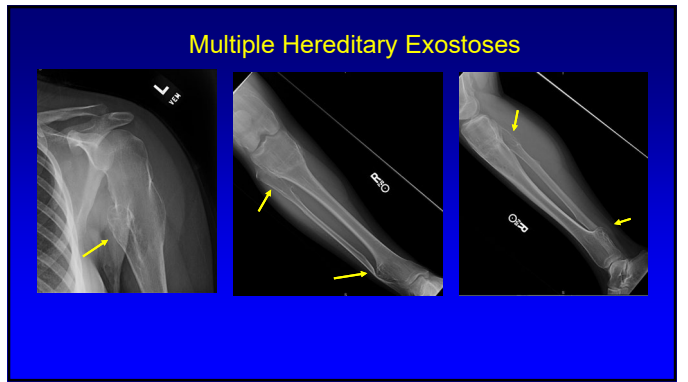
173



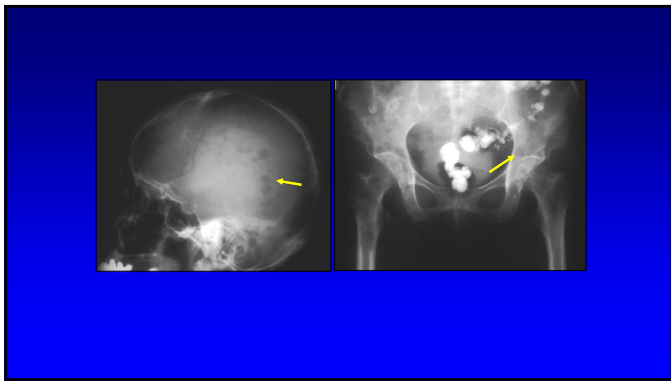
174



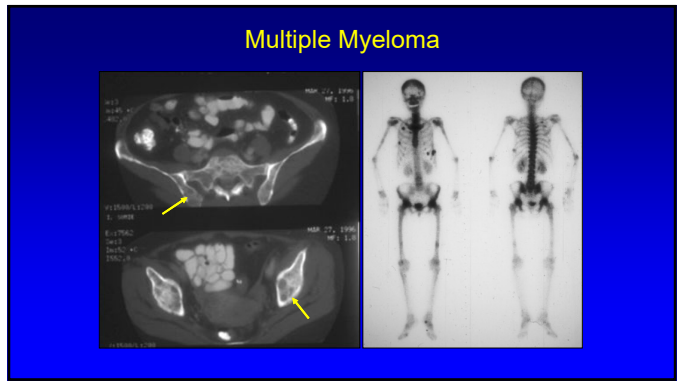
175



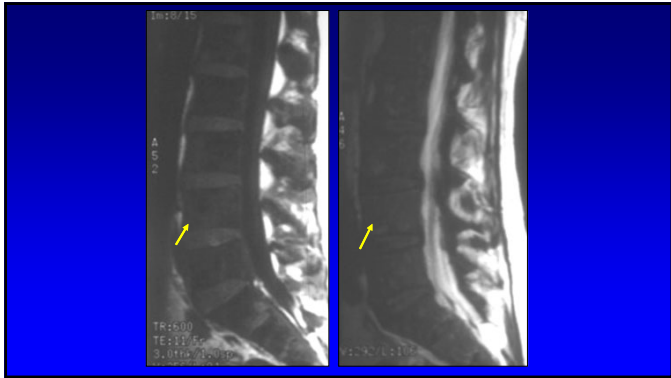
176



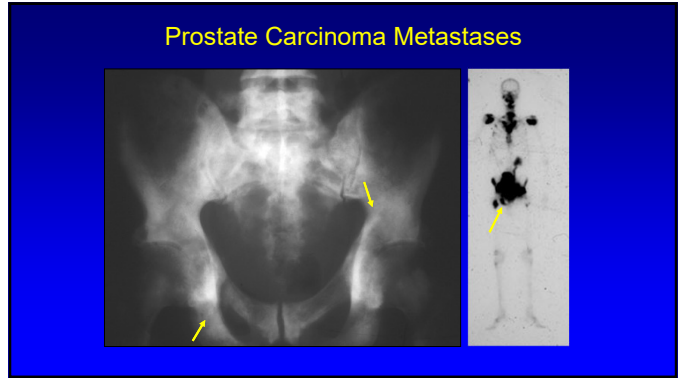
177



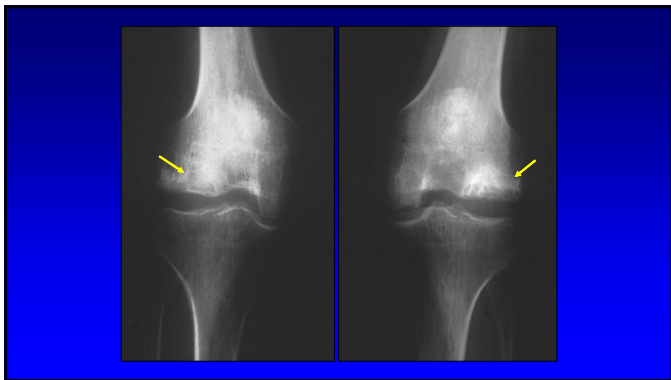
178



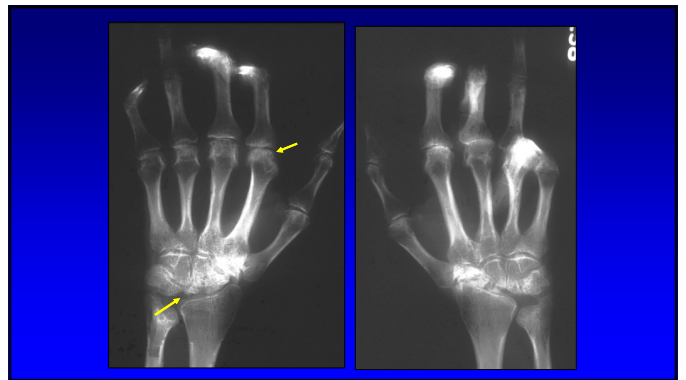
179



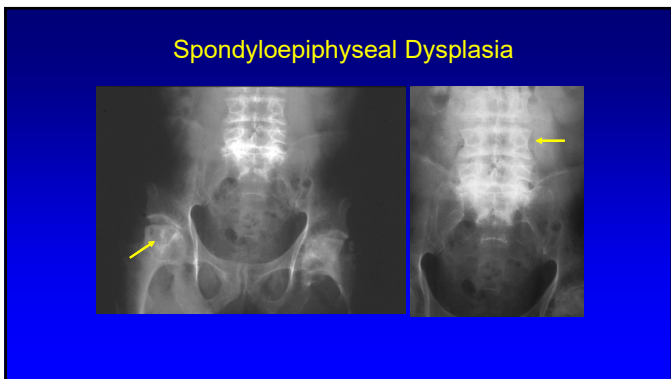
180



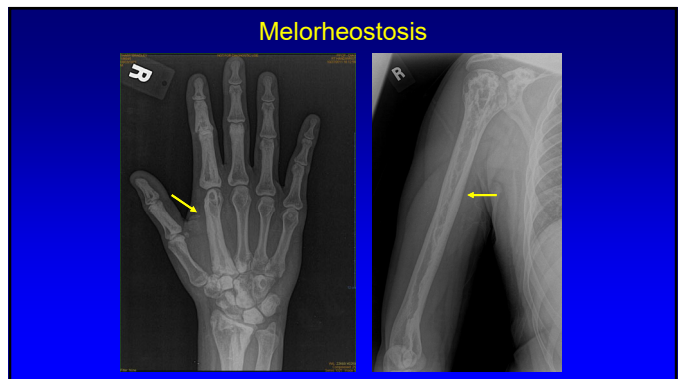
181



182

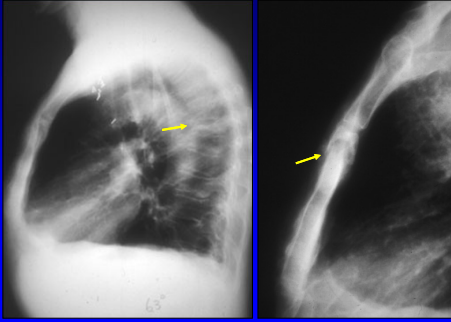


183



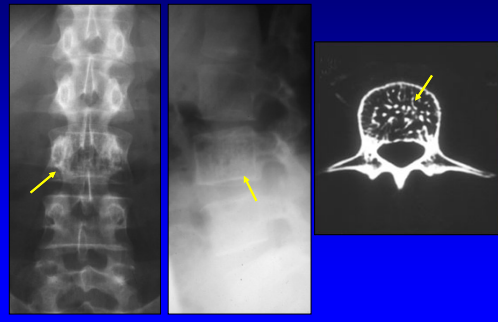
184

Vertebral + Sternal Insufficiency Fracture



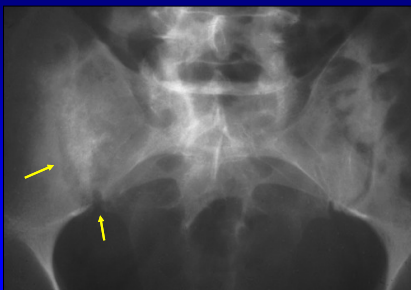
185

Hemangioma



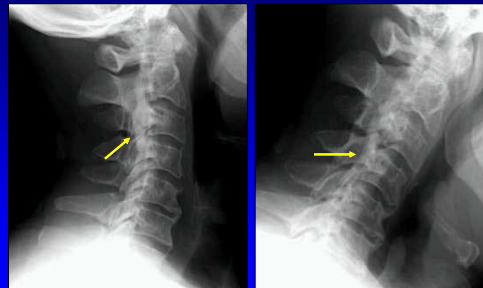
186

Septic Sacroiliitis



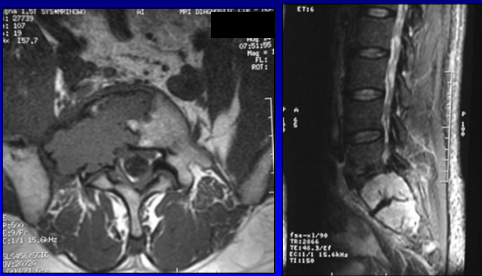
187

Ossification Posterior Longitudinal Ligament



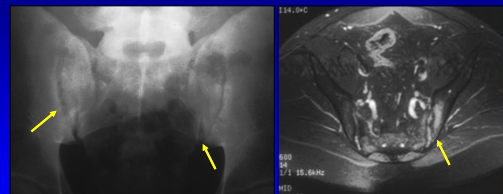
188

Plasmacytoma

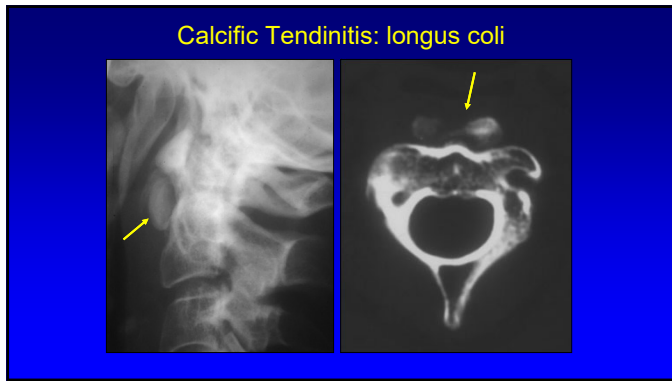


189

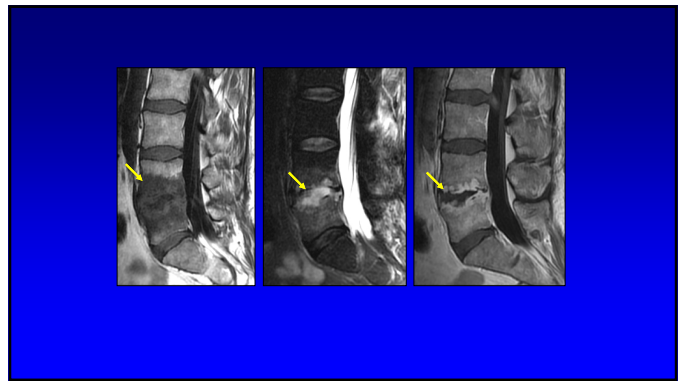
Crohn Disease



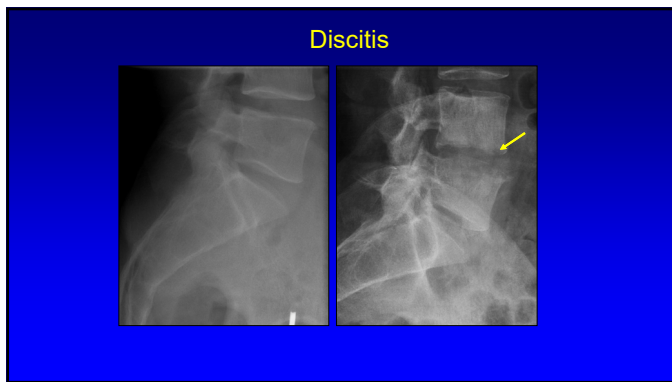
190



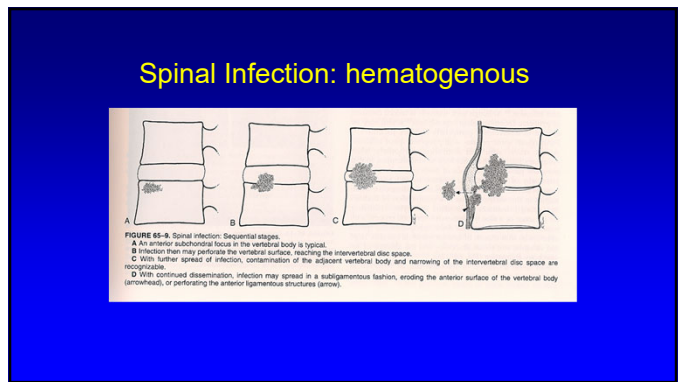
191



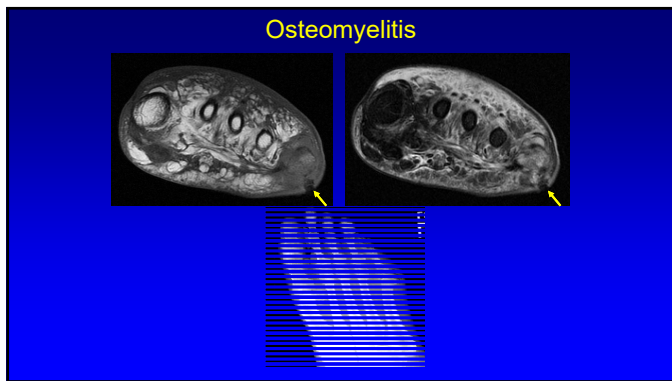
192



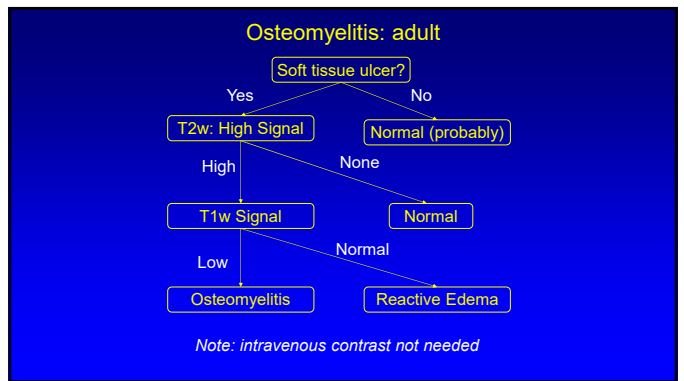
193



194

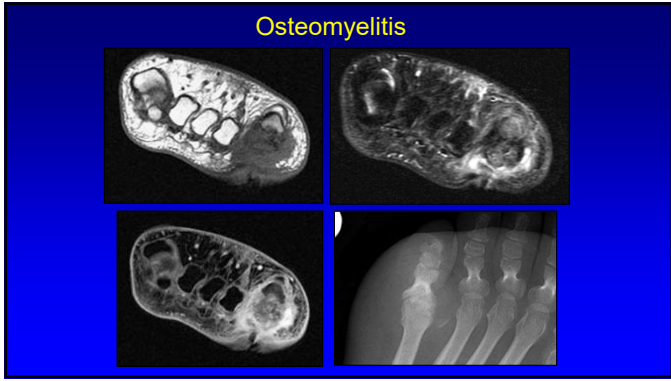


195

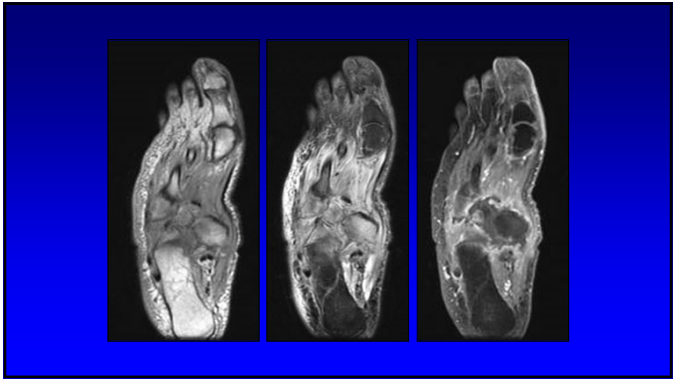


196

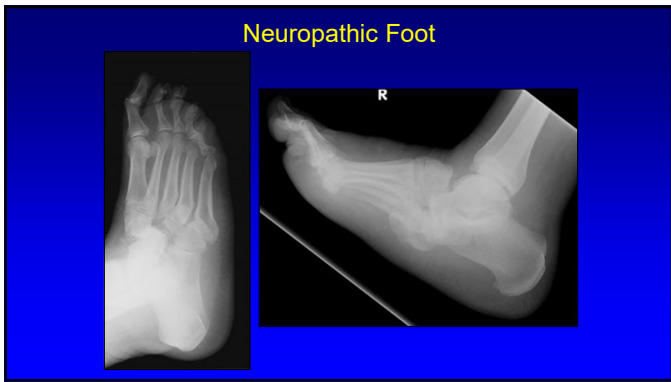




197



198



199

Thank you!

NYC Ann Arbor San Diego

Syllabus on line and other educational material:  
[www.jacobsonmskus.com](http://www.jacobsonmskus.com)

Twitter handle: @jjacobsn

200