

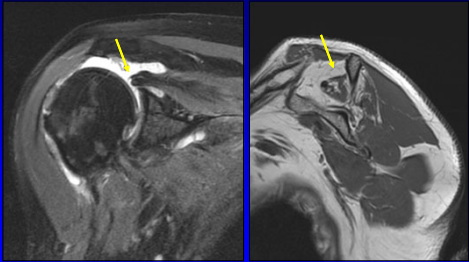
**Musculoskeletal Imaging Case Conference**

**Jon A. Jacobson, M.D.**  
*Professor of Radiology  
Chief, Musculoskeletal Imaging  
Department of Radiology*

UNIVERSITY OF  
**Cincinnati**  
Medical Center

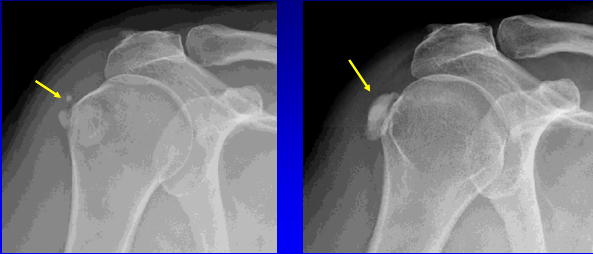
1

**Full-thickness Tear: supraspinatus**



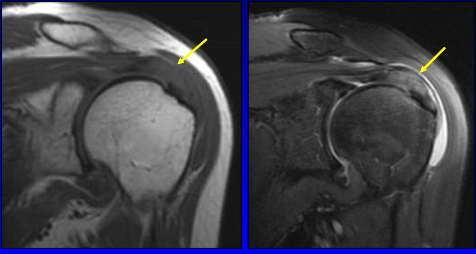
2

**Calcium Hydroxyapatite Deposition**



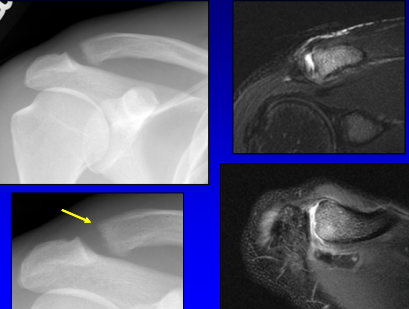
3

**Tendinosis: supraspinatus**




4

**Post-traumatic Osteolysis**



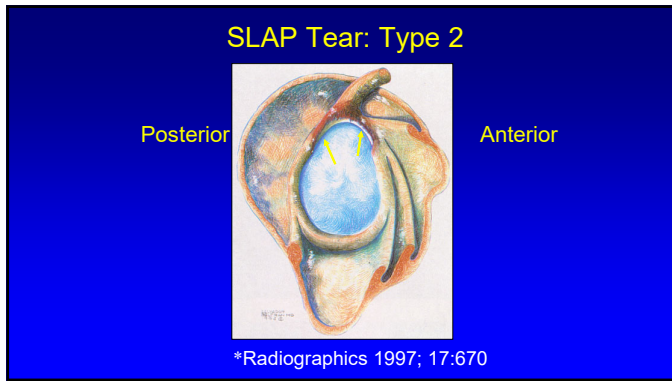
5

**SLAP Tear: Type 2**

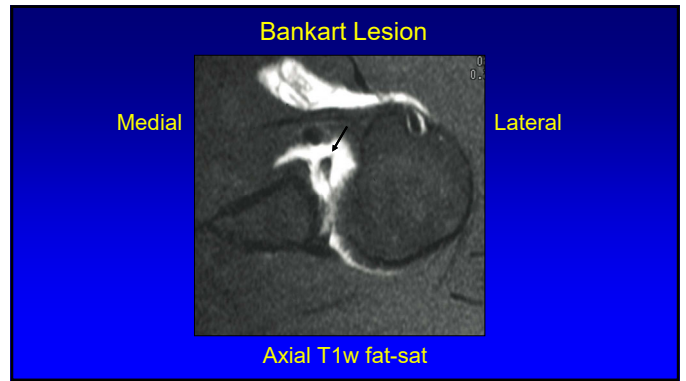


Coronal-oblique T1w fat-sat

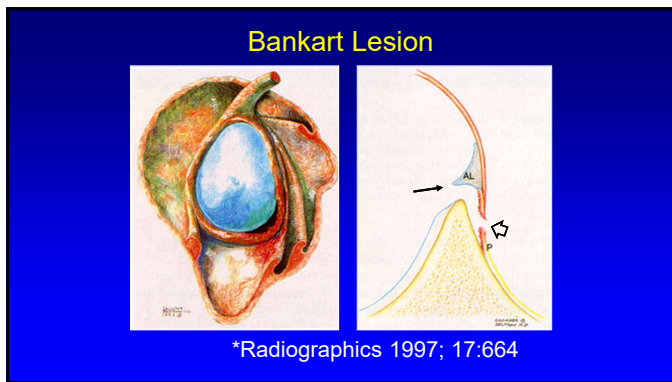
7



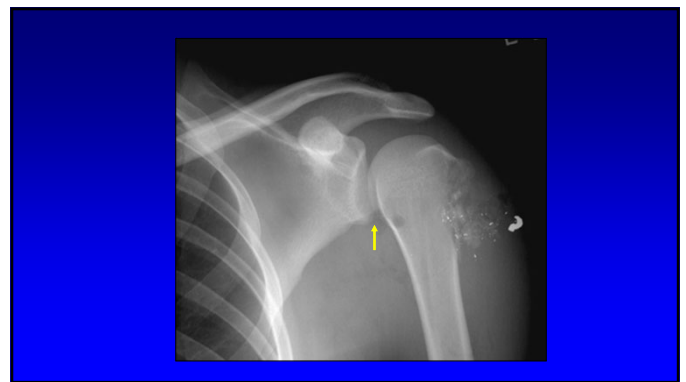
8



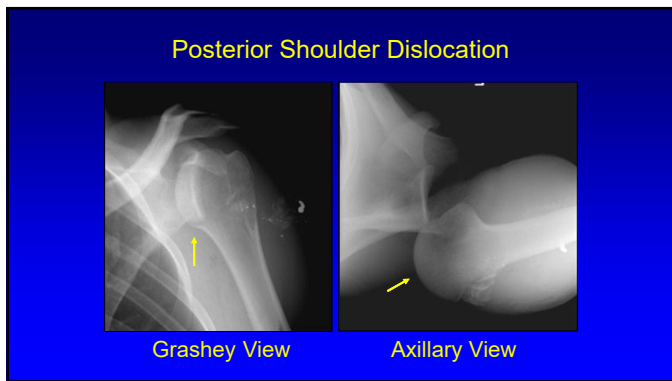
15



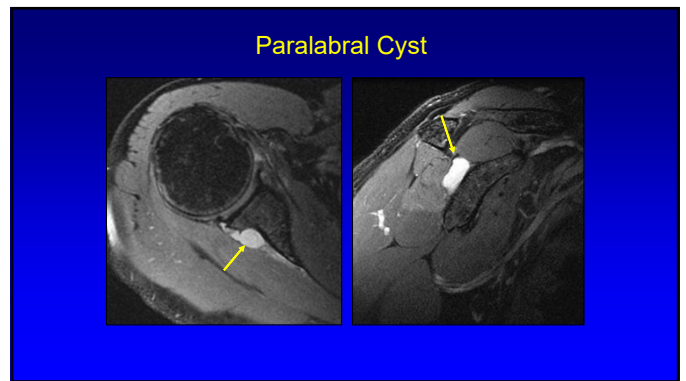
16



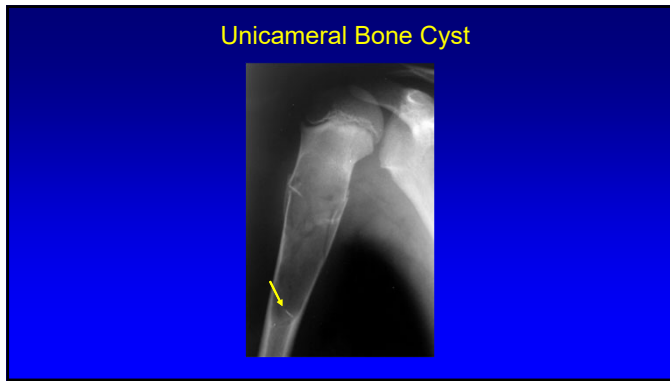
17



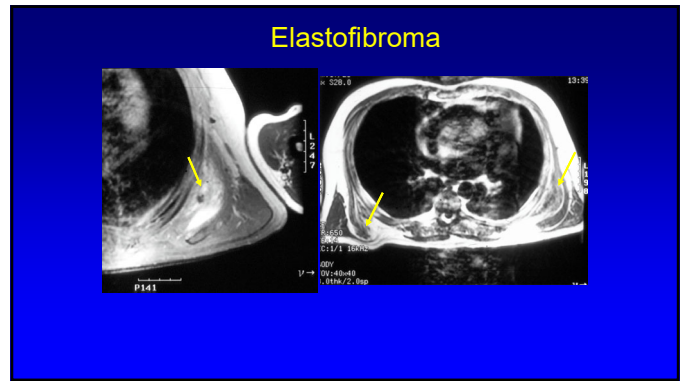
18



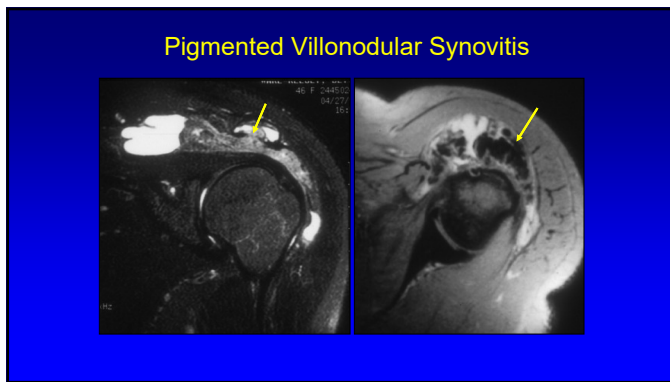
21



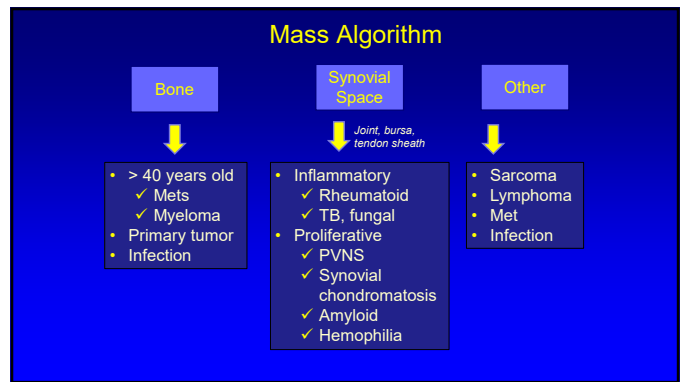
24



25



27



28

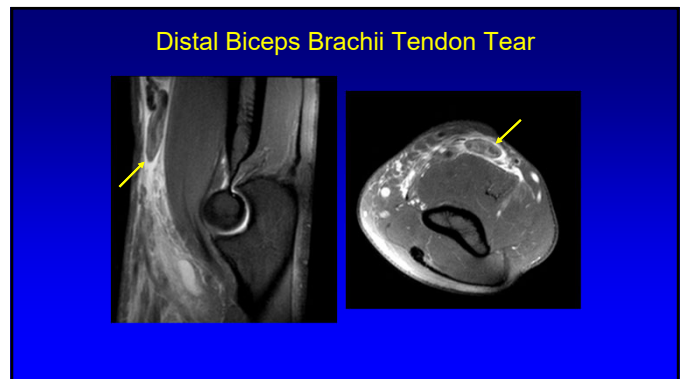
### University of Cincinnati

- Chair: Mary Mahoney, MD
- 54 Radiologists
- 7 MSK
- 2 Fellows
- Skyline chili, Graeters ice cream
- 4 hour drive south from Detroit



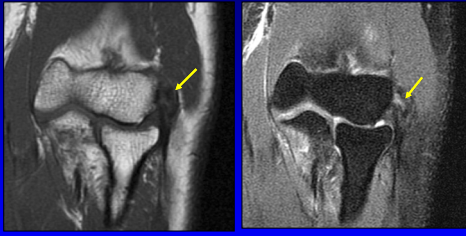


29



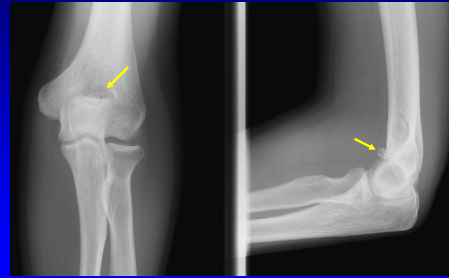
30

Common Extensor Tendinosis



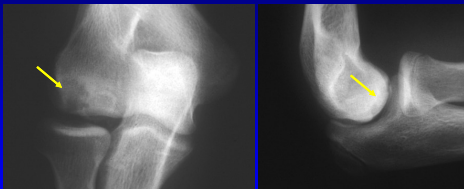
32

Intra-articular Body



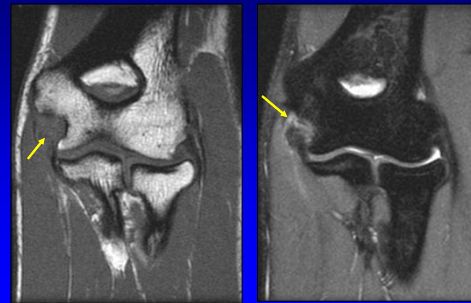
33

Osteochondral Abnormality



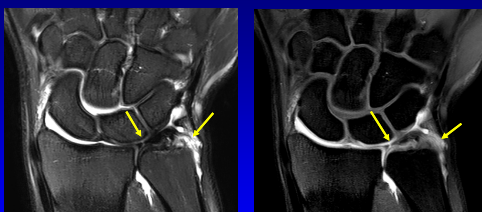
34

Ulnar Collateral Ligament Tear



35

TFC Tear



Coronal T1w

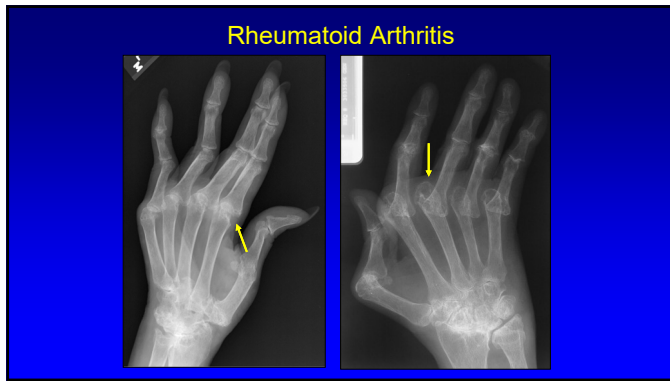
Coronal T2w

36

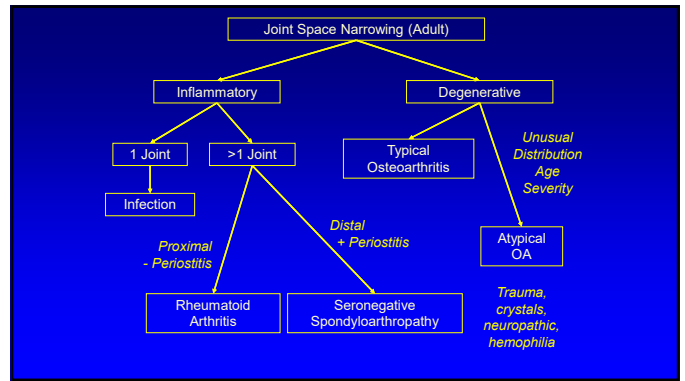
Triangular Fibrocartilage Tear



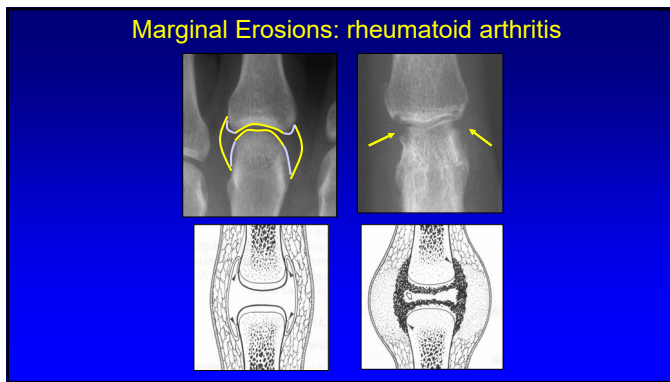
37



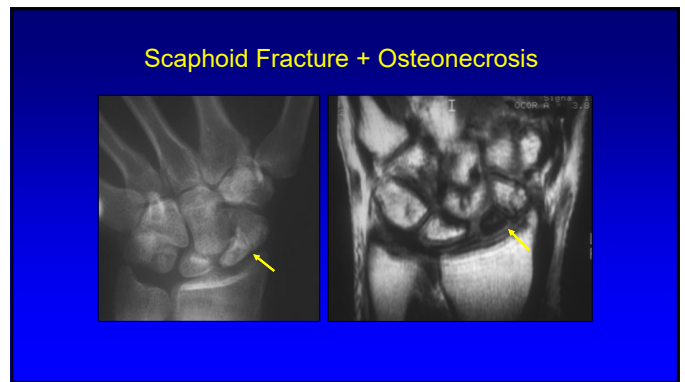
39



42



43



44



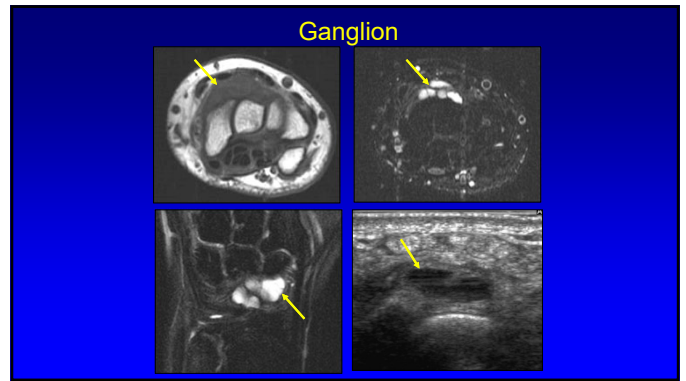
45



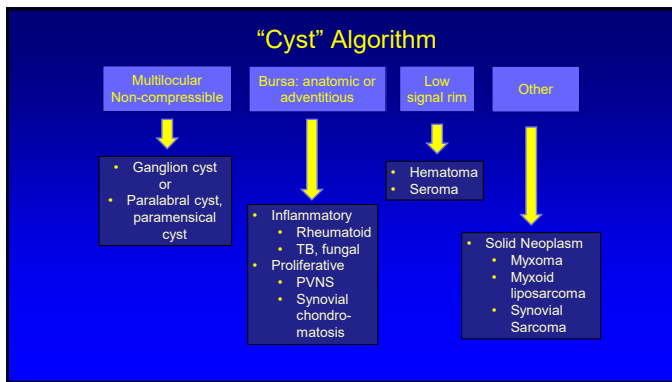
47



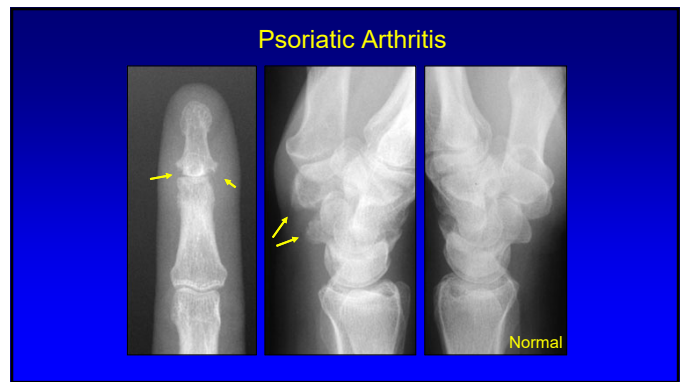
48



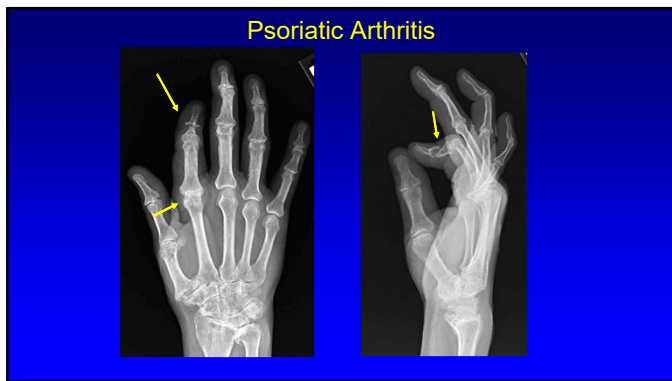
50



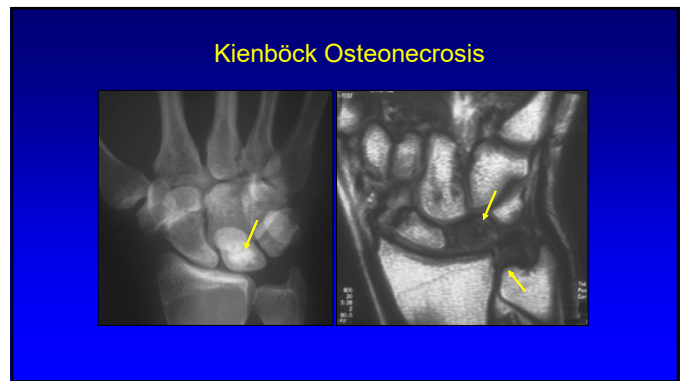
51



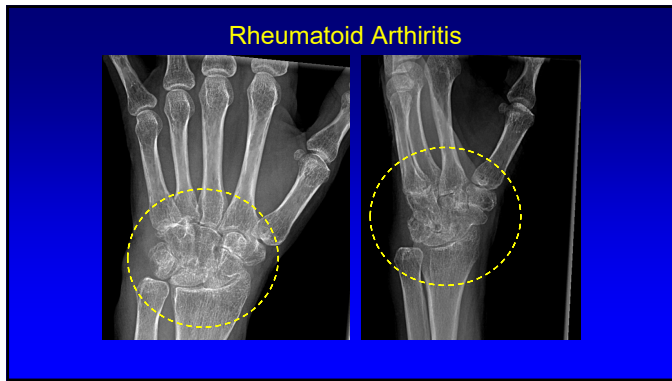
52



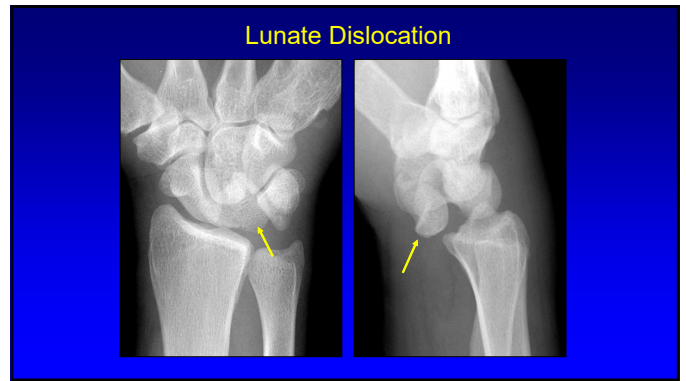
54



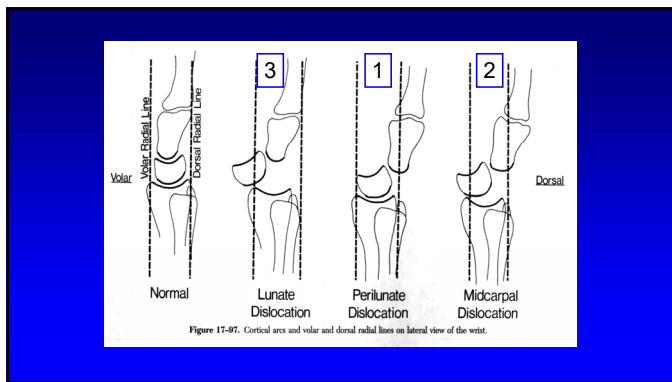
55



56



57



58



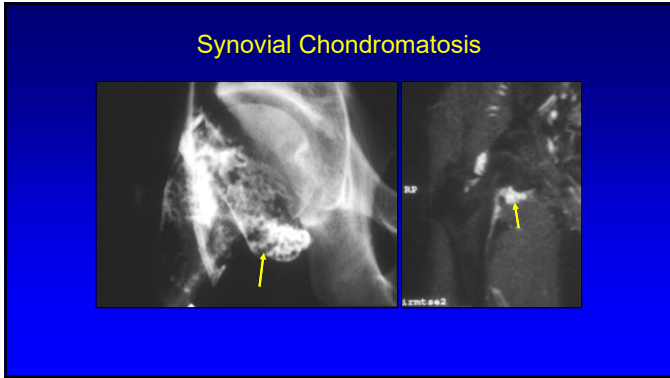
59



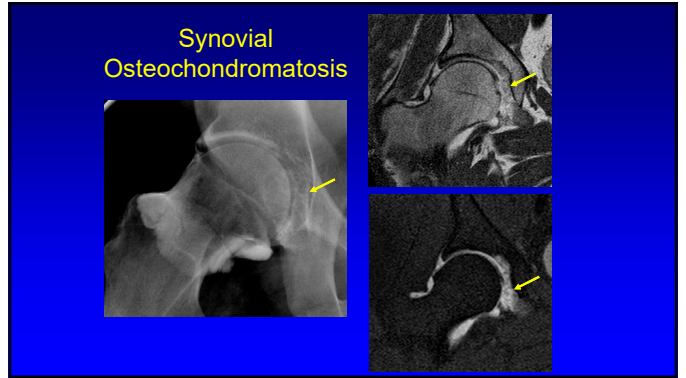
65



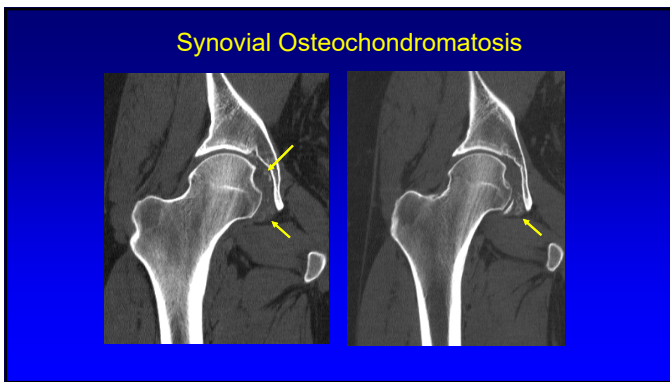
67



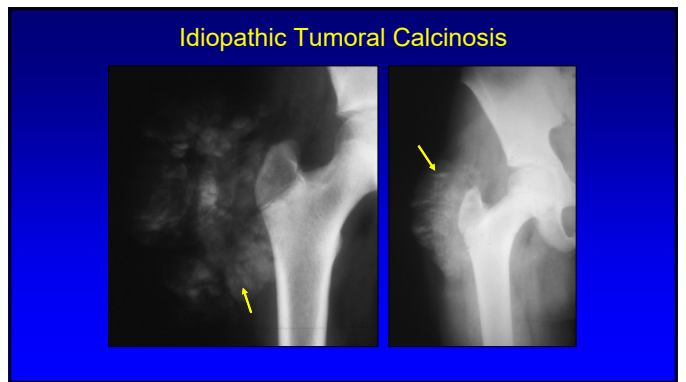
75



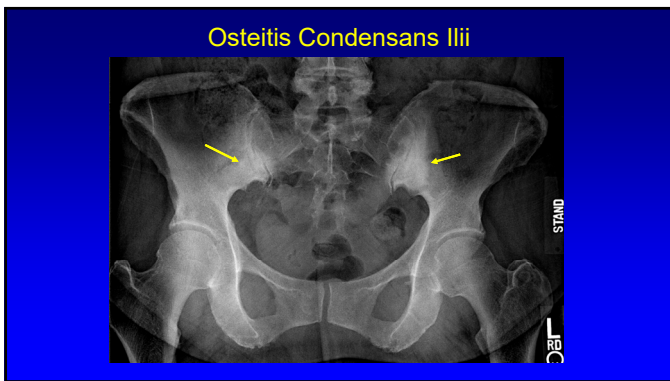
76



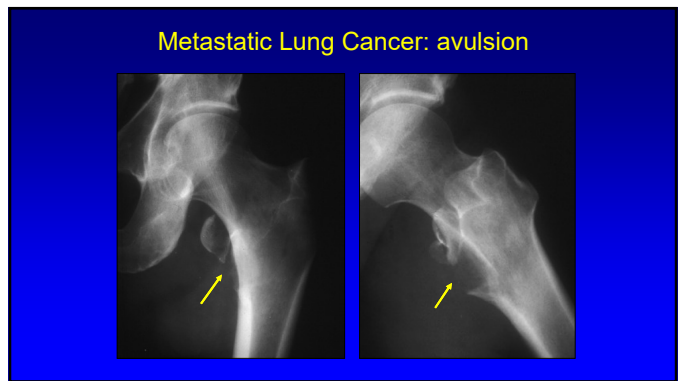
77



78



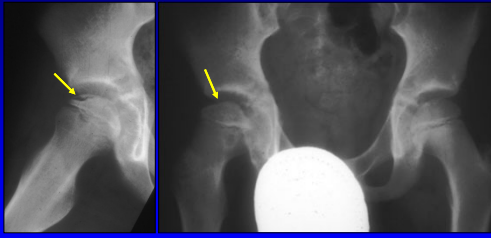
80



81

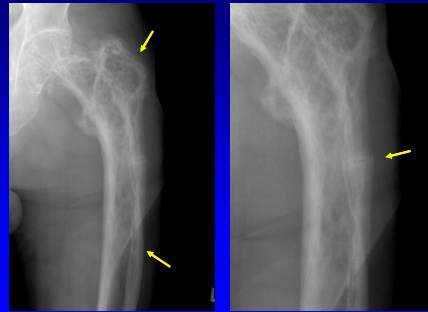


Legg-Calvé-Perthes Disease (osteonecrosis)



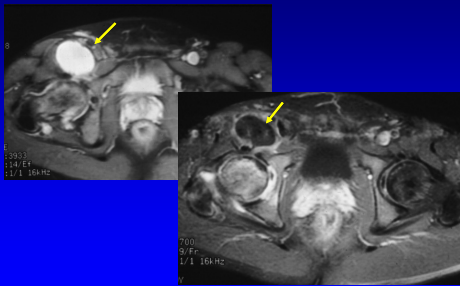
82

Paget Disease + Insufficiency Fracture



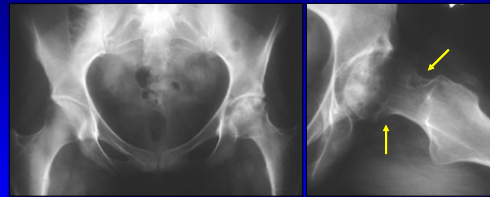
84

Iliopsoas Bursal Distention

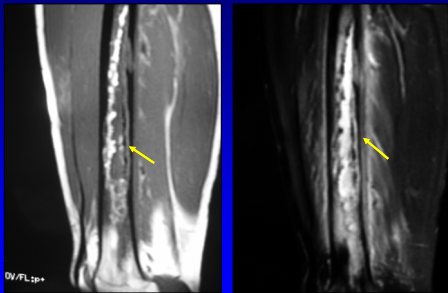


85

Pigmented Villonodular Synovitis

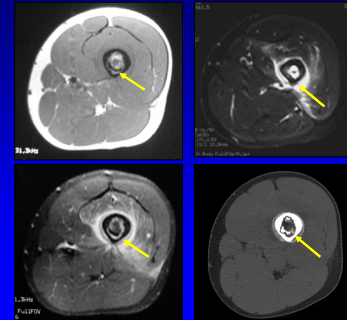


86

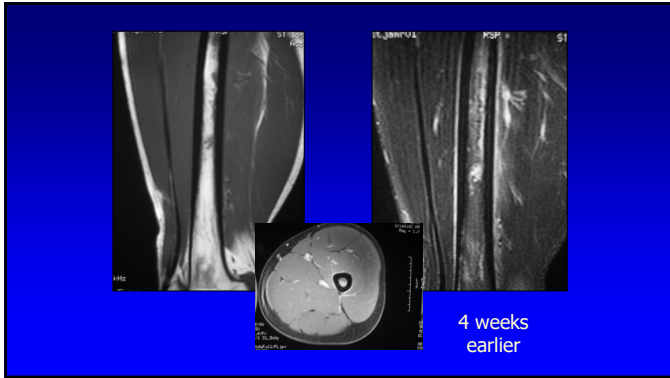


87

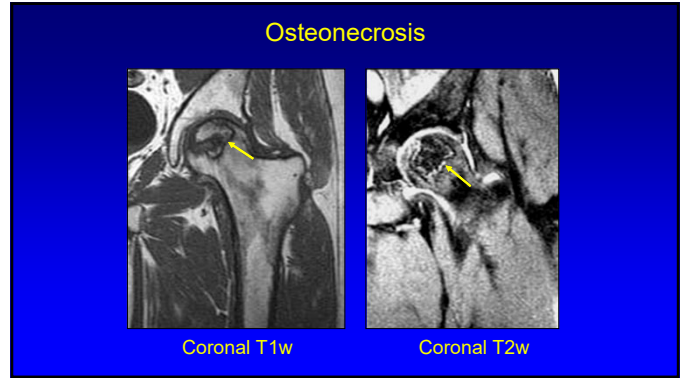
Chronic Osteomyelitis: sequestrum



88



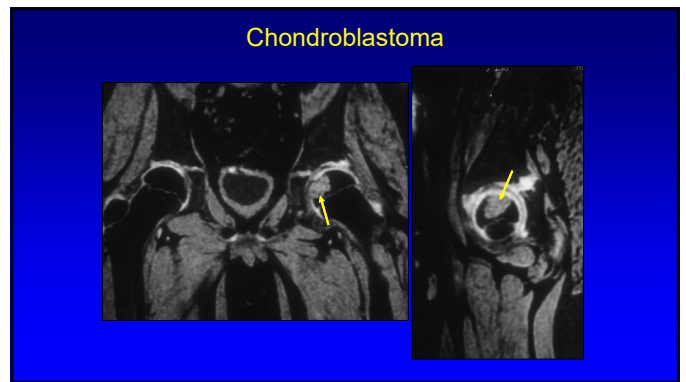
89



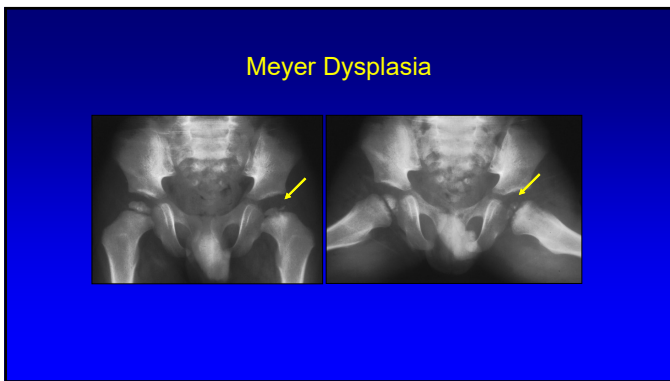
90



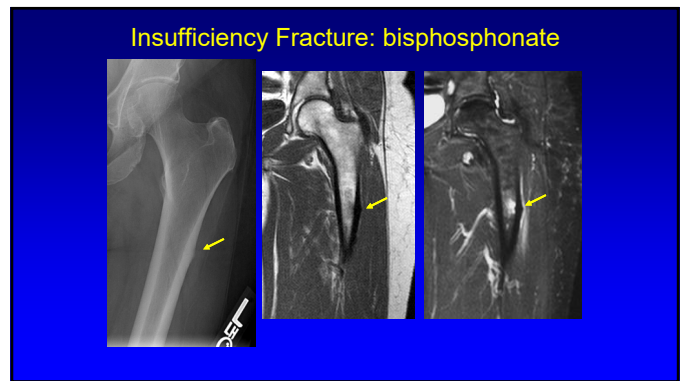
91



92



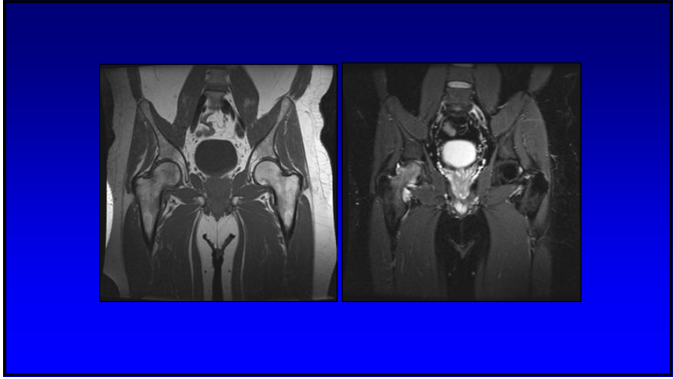
93



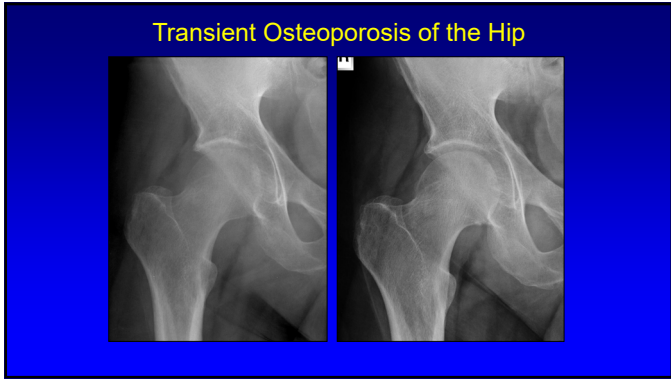
94



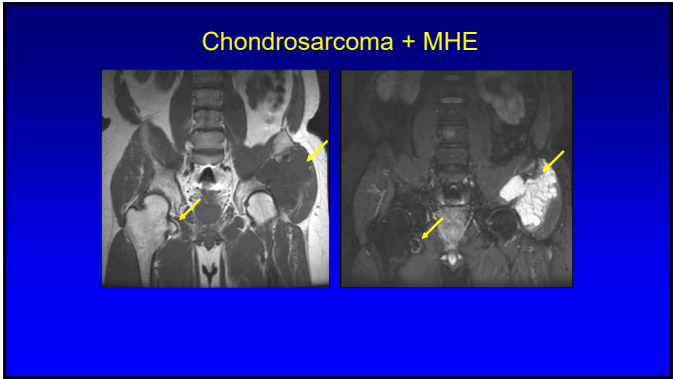
95



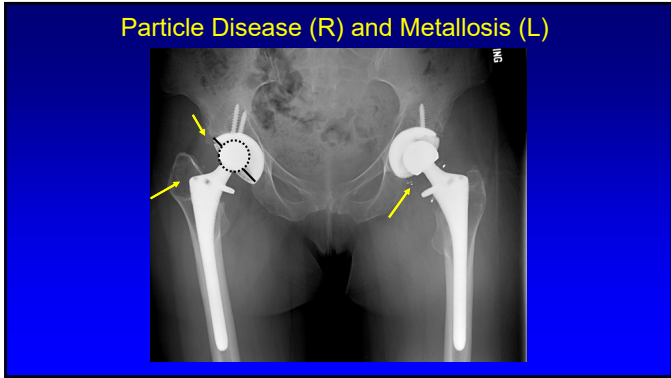
96



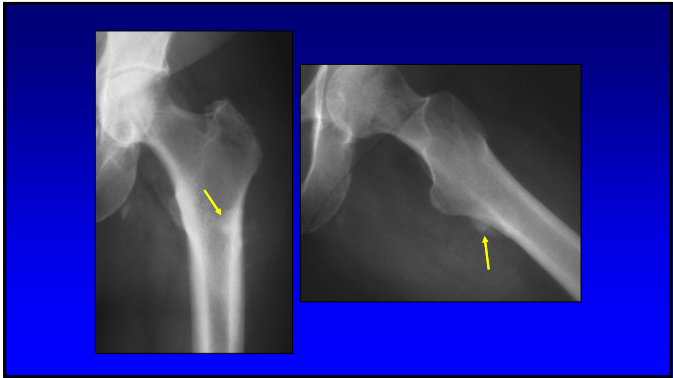
97



98

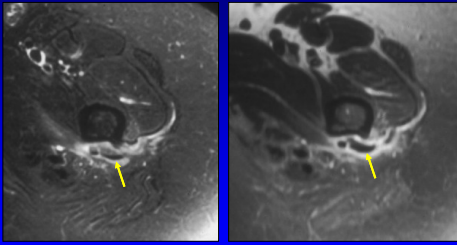


99

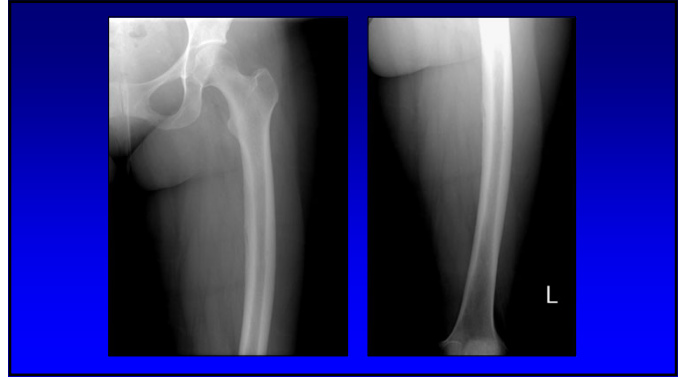


104

Gluteus Maximus: calcific tendinitis

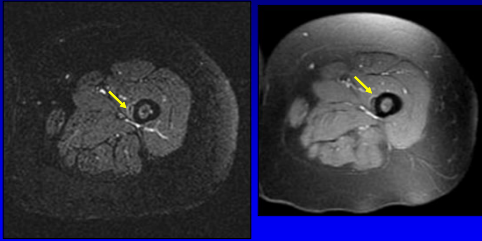


105



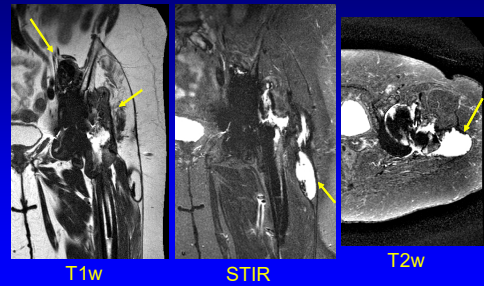
107

Thigh Splints



108

Metal-on-Metal: Pseudotumor

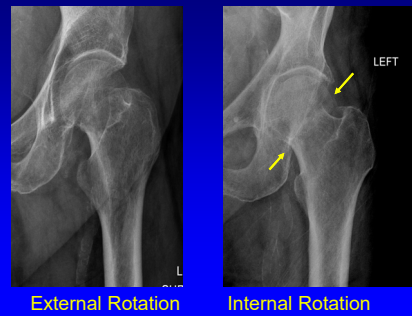


109



110

Femoral Neck Fracture



111

### Femoral Neck Fracture:

- Internal rotation radiograph essential
- Goal: diagnose non-displaced femoral neck fracture
- Garden Classification: 1 – 4
  - 1 & 2: non-displaced → percutaneous pins
  - 3 & 4: displaced → arthroplasty (risk of AVN)
- With osteopenia, MRI necessary
  - CT not effective

114

### Garden Classification

1  
2  
3  
4

Valgus Impacted  
d

Type I: Impacted fracture  
Type II: Non-displaced fracture  
Type III: Partially displaced  
Type IV: Displaced fracture. Vertical fracture line generally suggests poorer prognosis.

115

### Femoral Neck Fracture: Garden 1

116

### Femoral Neck Fracture: now displaced

Valgus Impacted Garden 1  
Oops

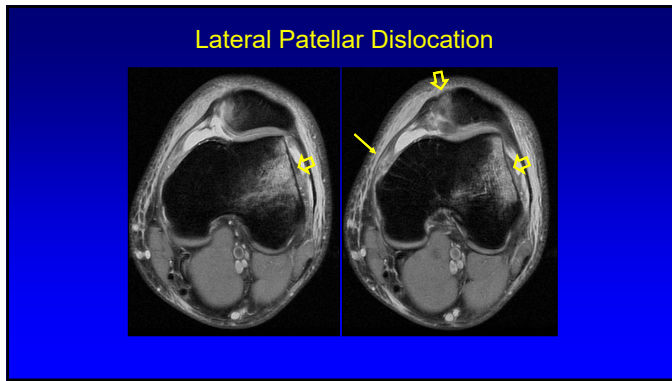
120

### Amyloidosis

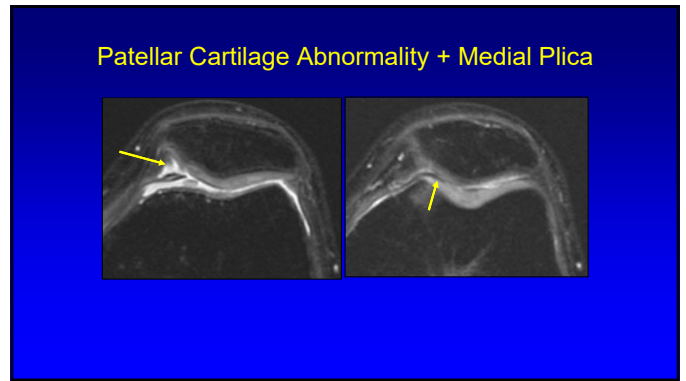
122

### Bucket-handle Tear: medial meniscus

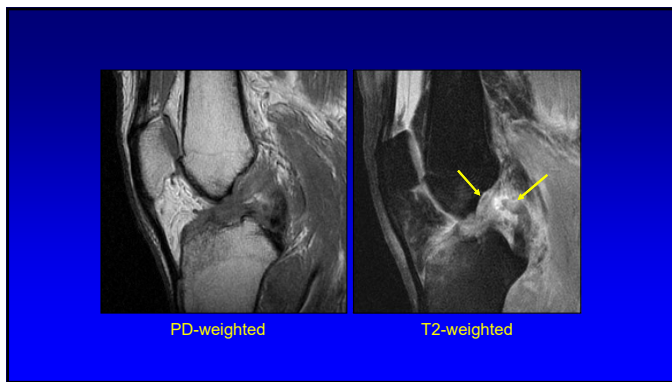
123



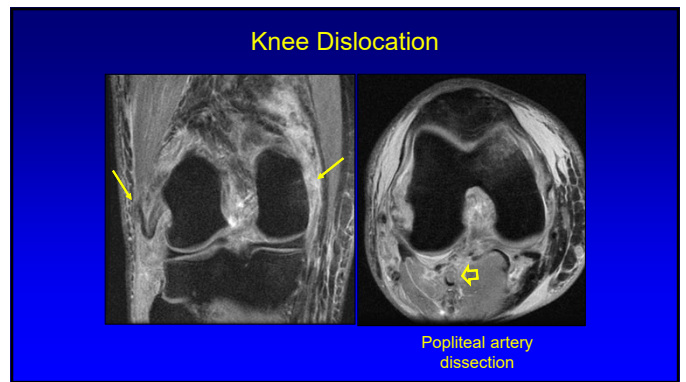
126



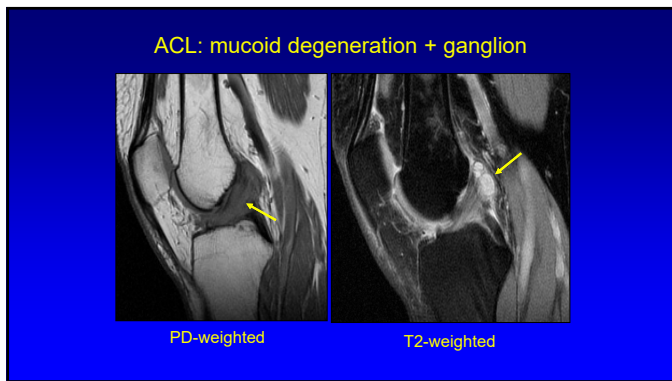
128



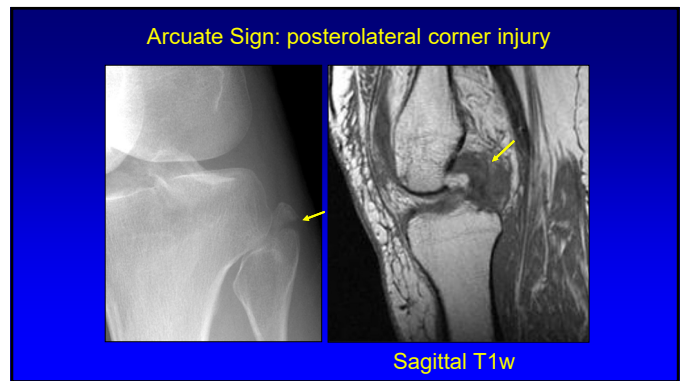
132



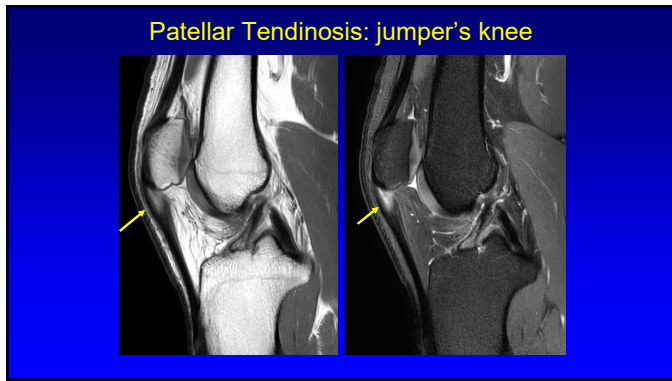
133



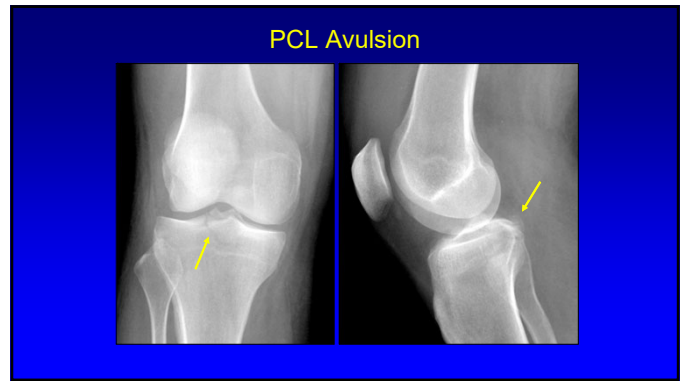
134



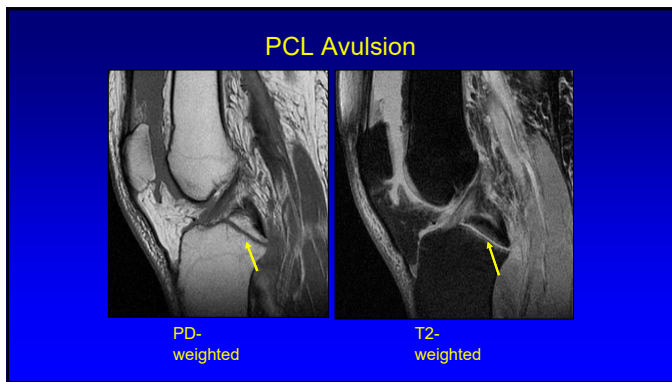
139



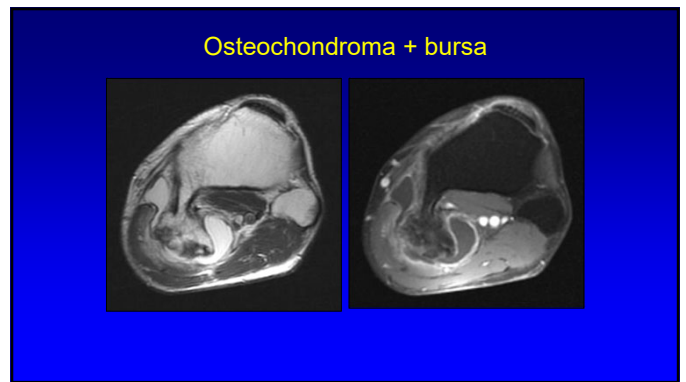
140



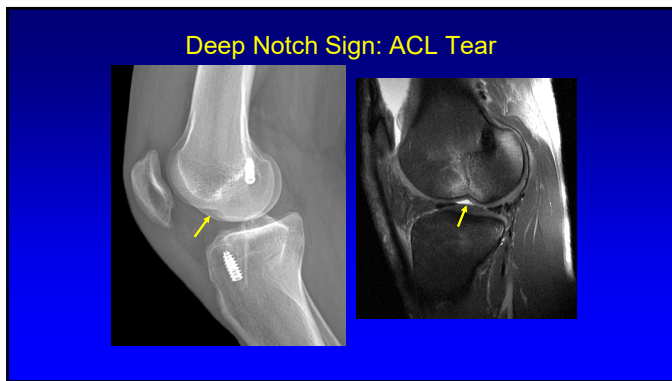
141



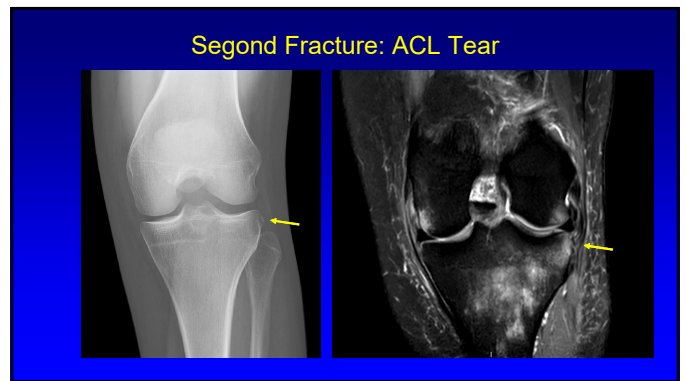
142



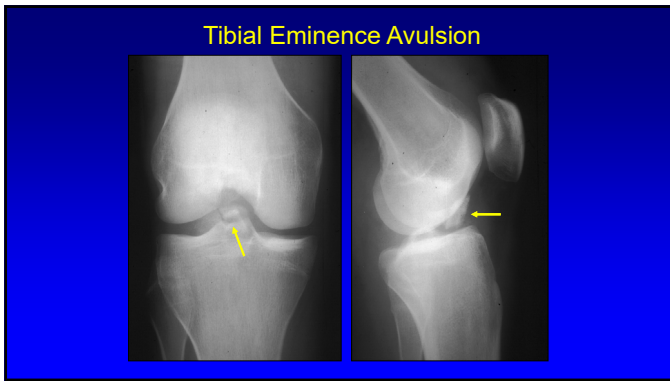
144



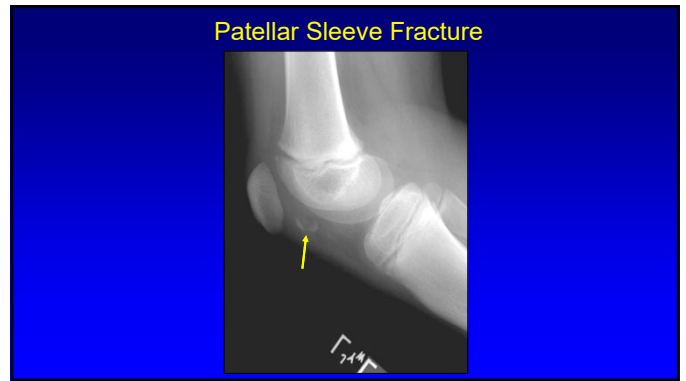
146



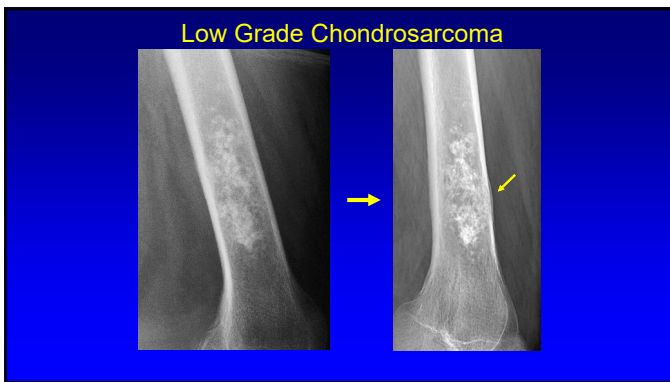
149



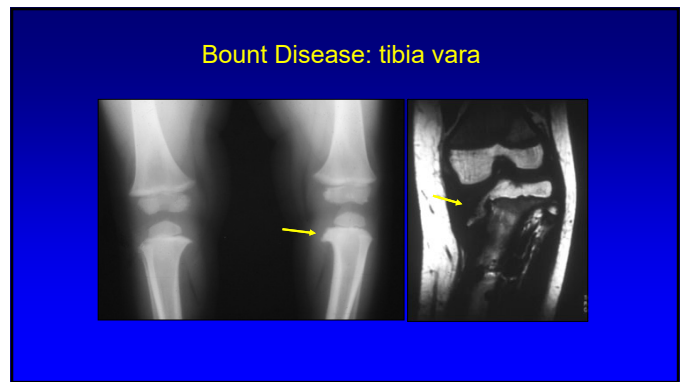
150



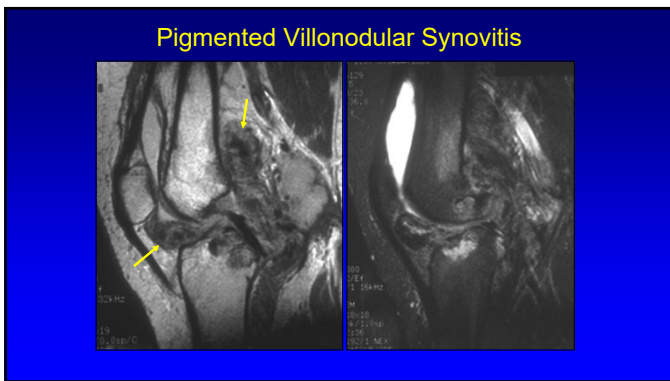
153



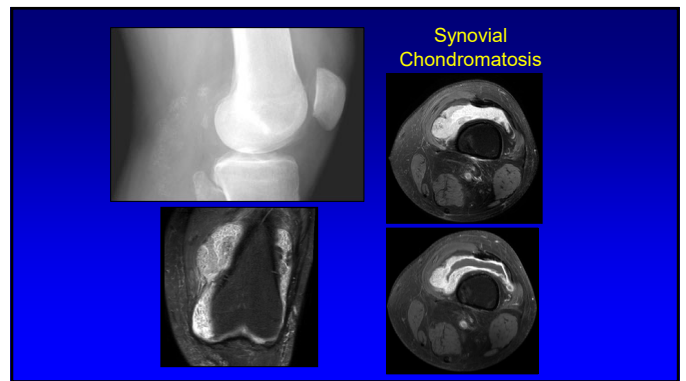
154



157

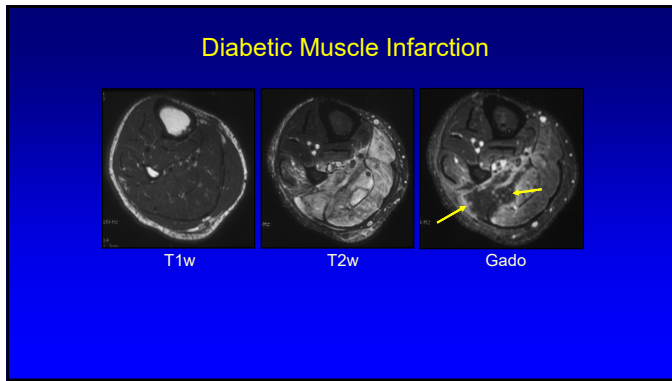


158

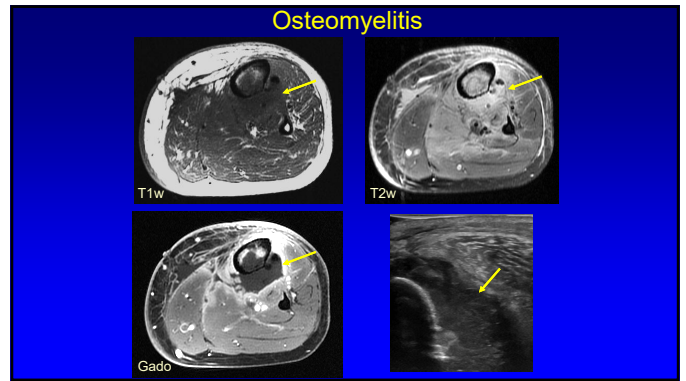


159

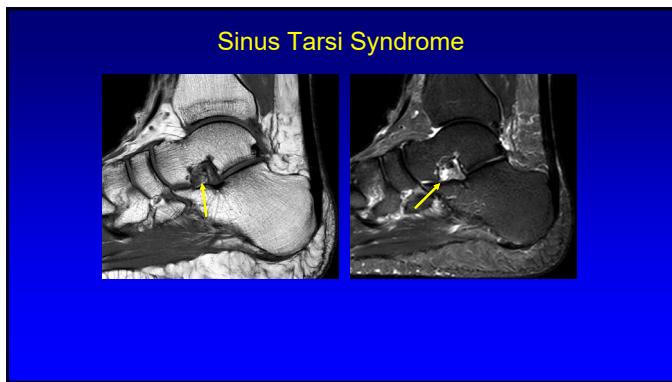




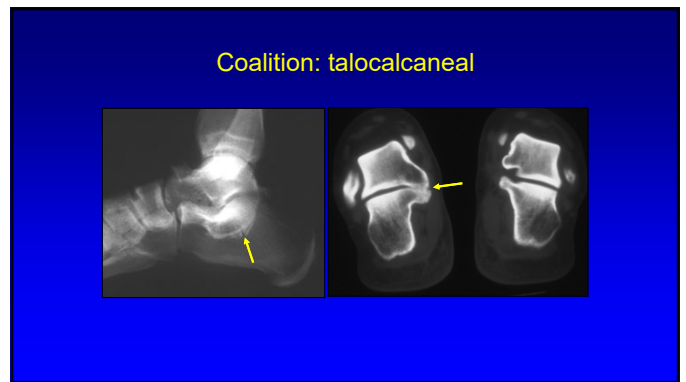
162



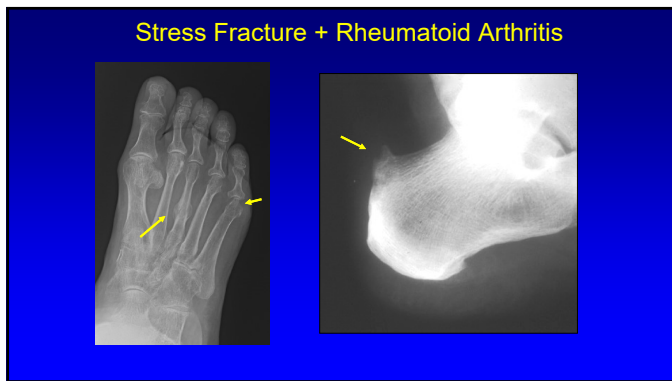
163



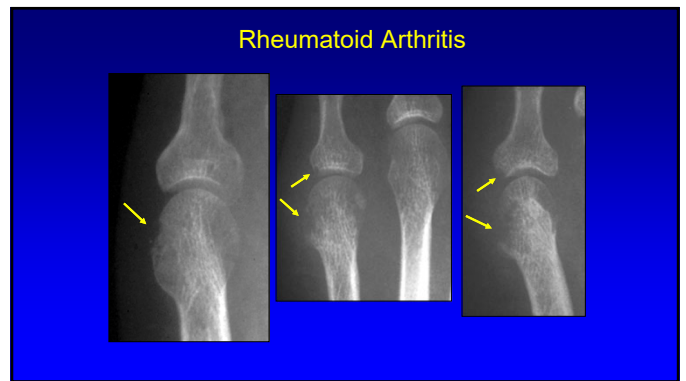
166



167

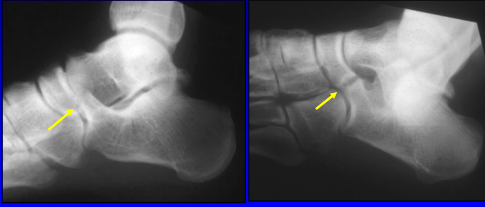


169



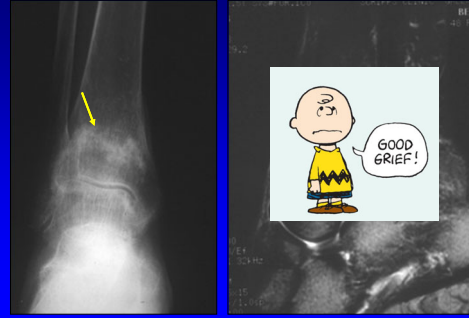
170

Coalition: calcaneonavicular



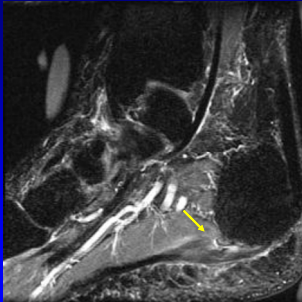
173

Insufficiency Fracture



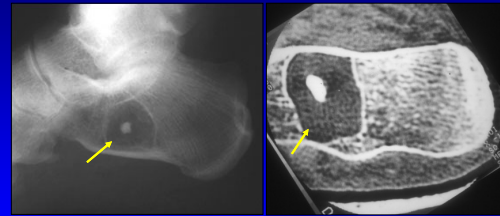
174

Plantar Fasciopathy



175

Intra-osseous Lipoma



176

Fatigue Fracture: Navicular

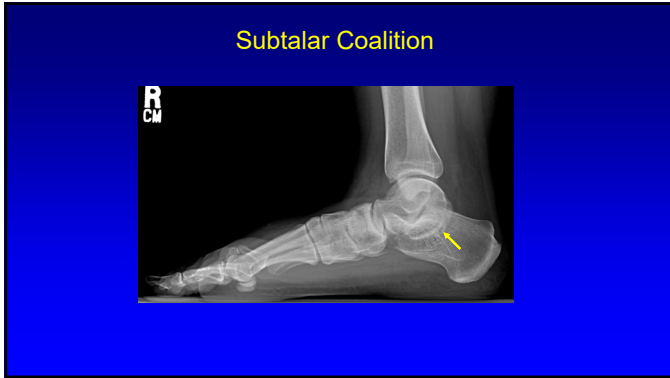


178

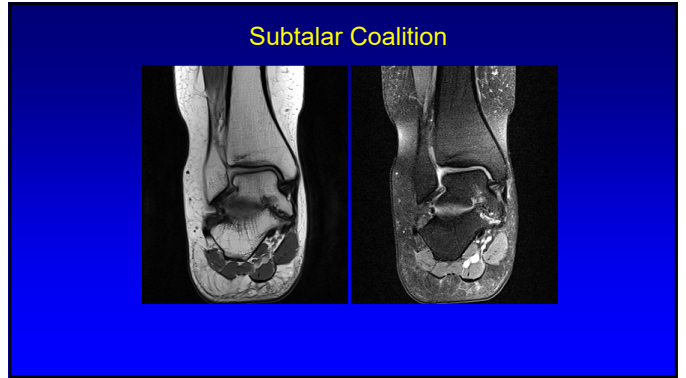
Hemophilia



179



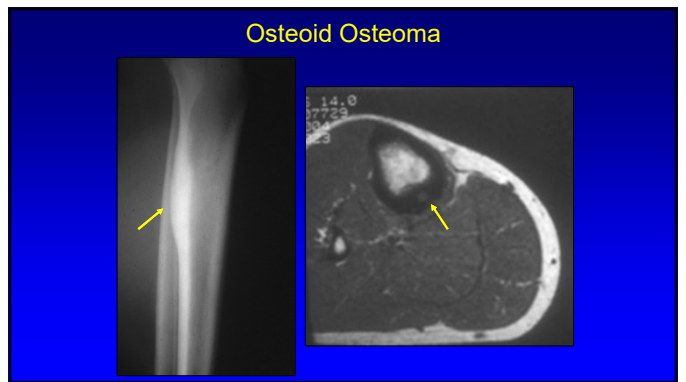
180



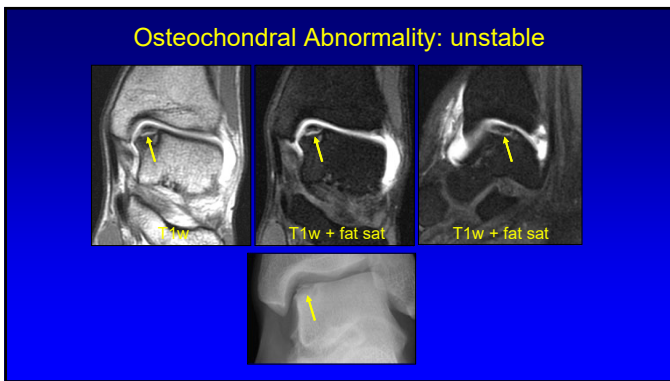
181



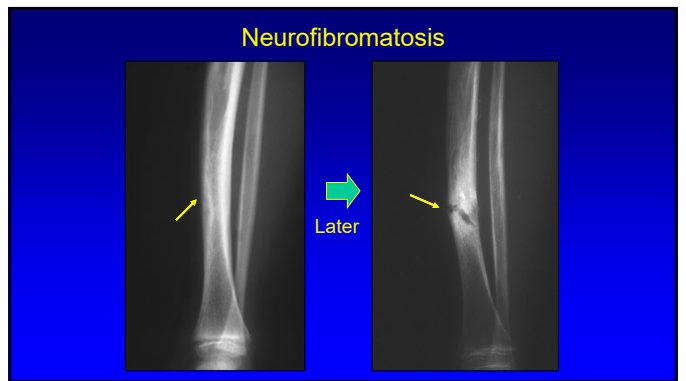
182



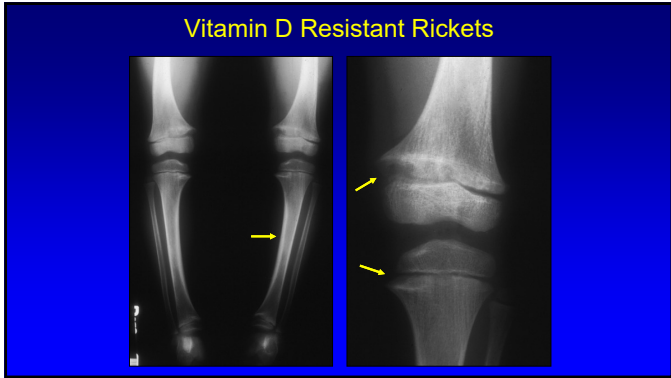
183



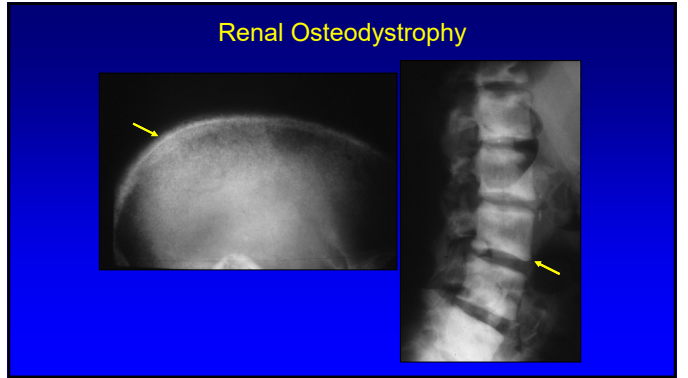
184



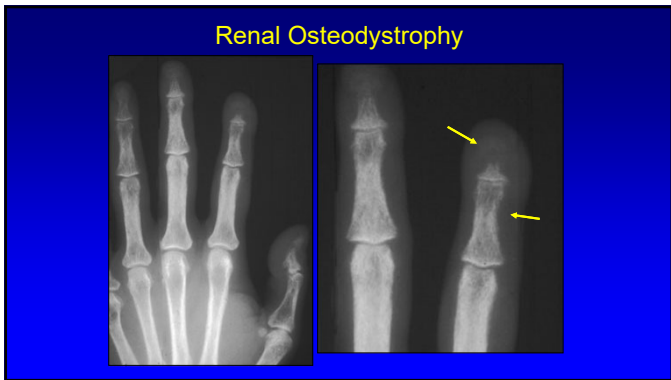
191



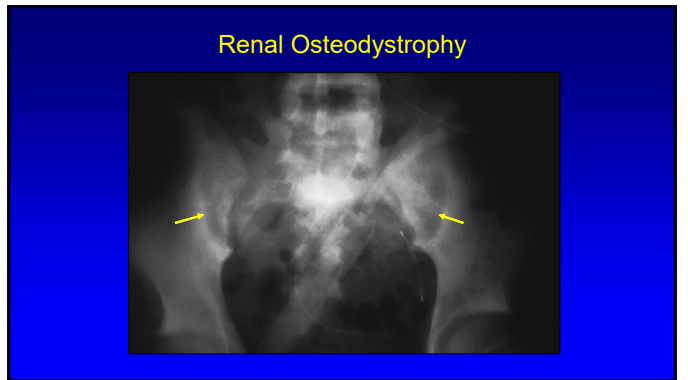
192



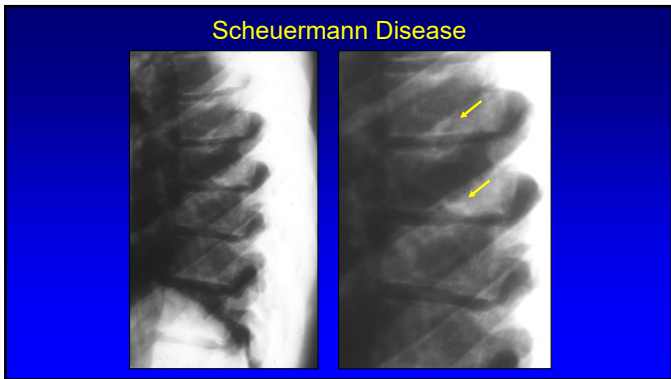
205



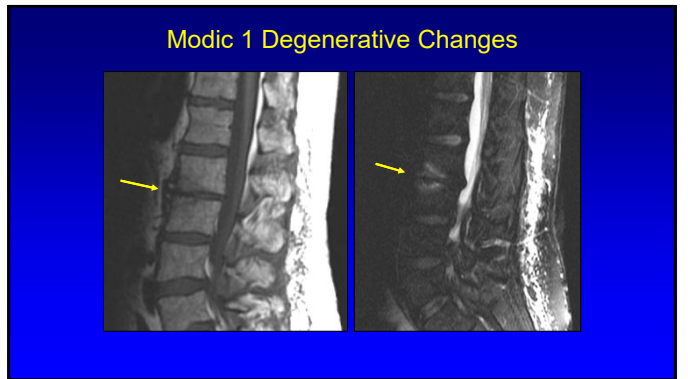
206



207

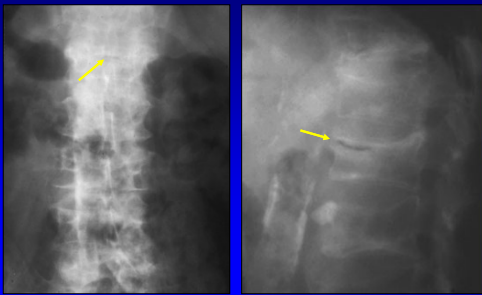


208



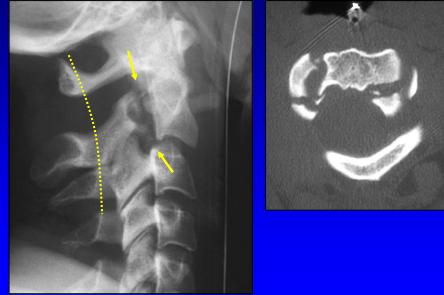
209

Ischemic Collapse (Kümmell Disease)



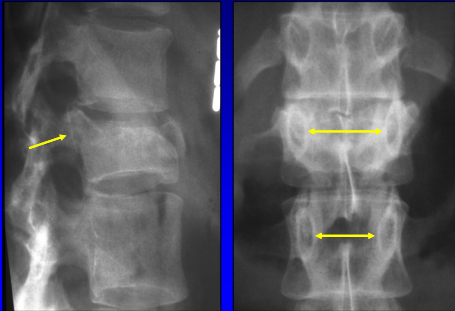
210

Hangman's Fracture



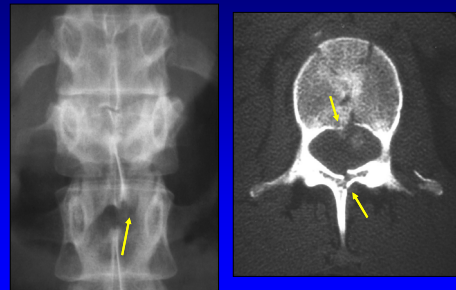
211

Burst Fracture



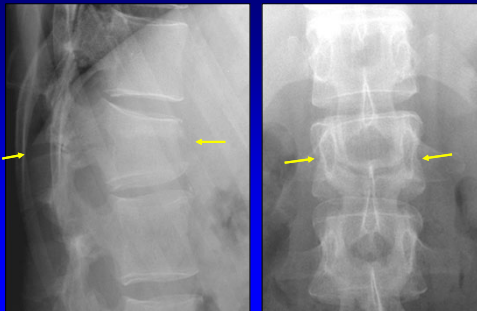
214

Burst Fracture



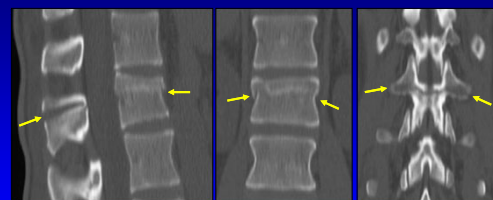
215

Seat-belt Injury: Chance Fracture

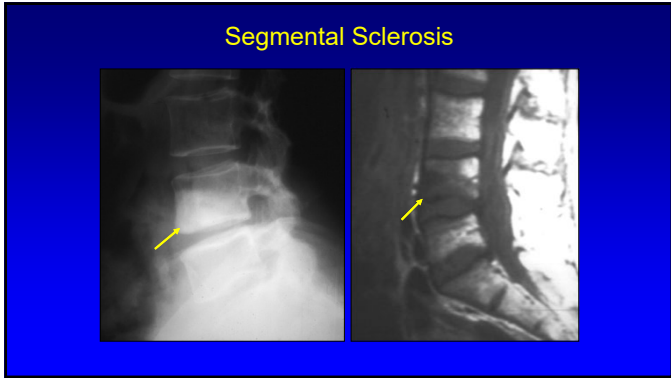


216

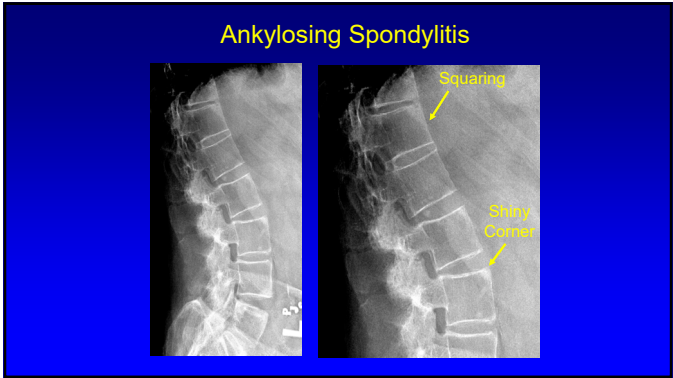
Seat-belt Injury: Chance Fracture



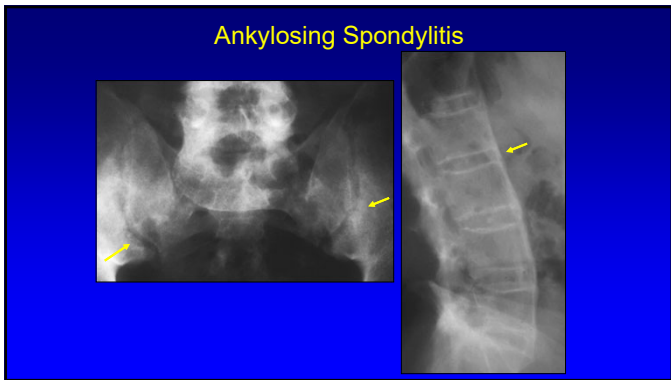
217



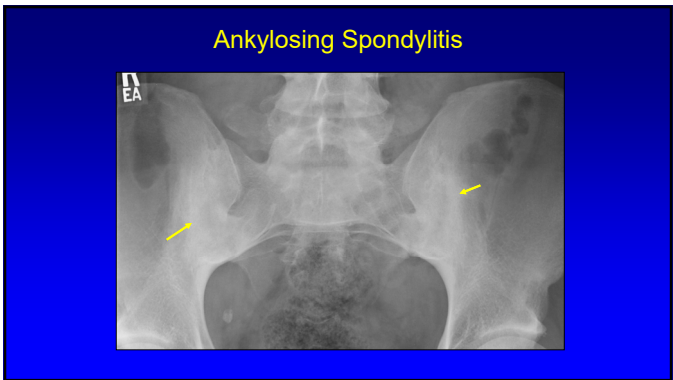
218



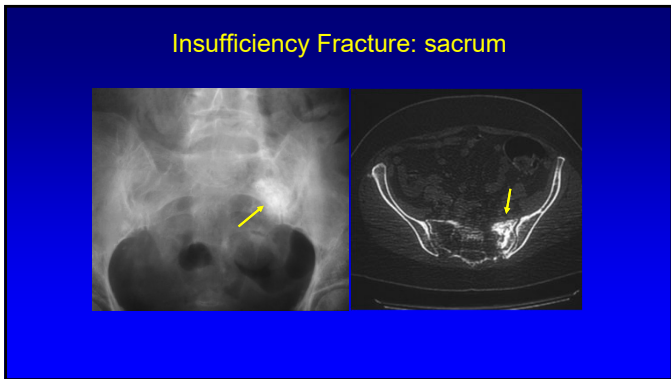
220



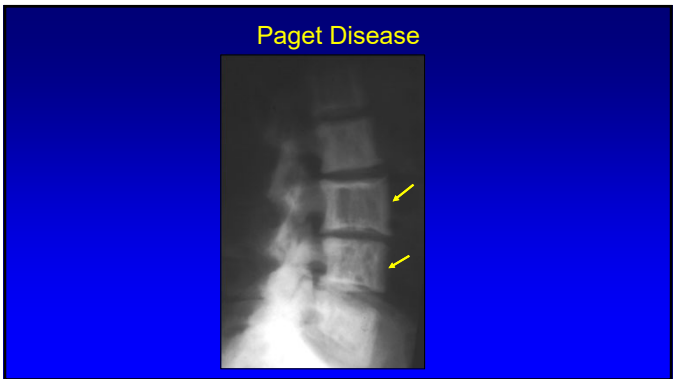
221



222

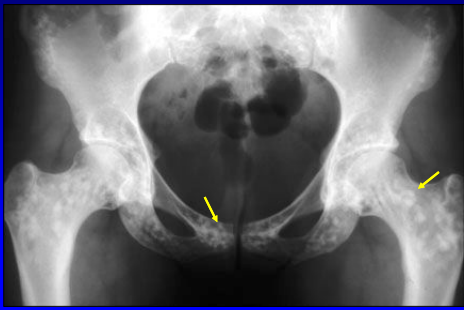


223



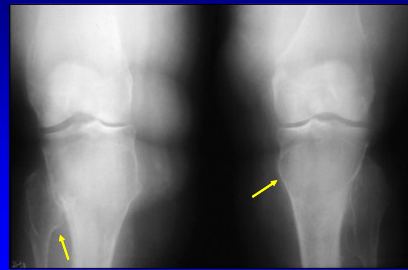
225

Osteopoikilosis

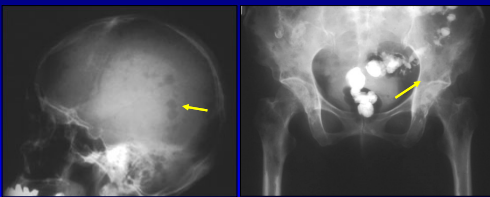


226

Multiple Hereditary Exostoses



228



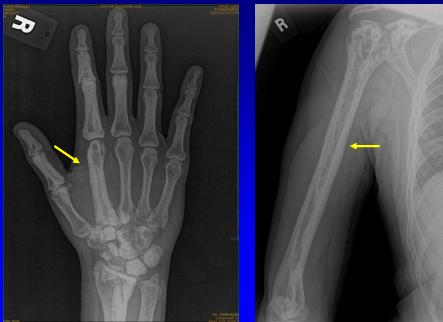
229

Multiple Myeloma



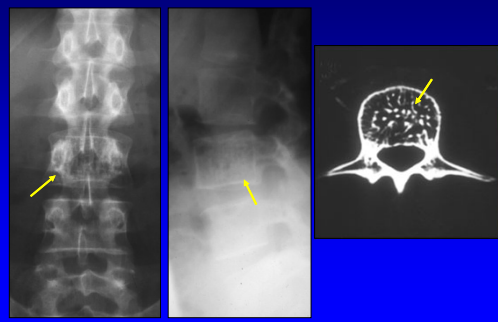
230

Melorheostosis

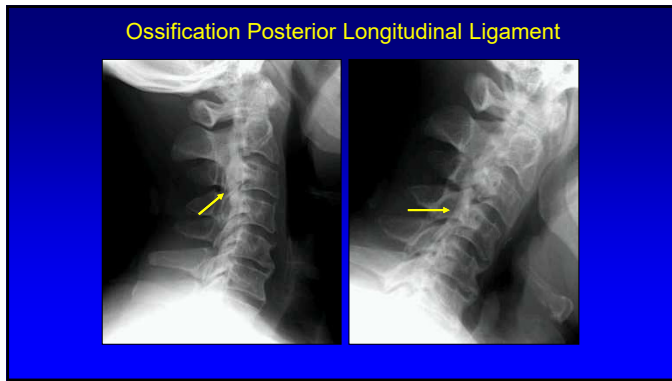


241

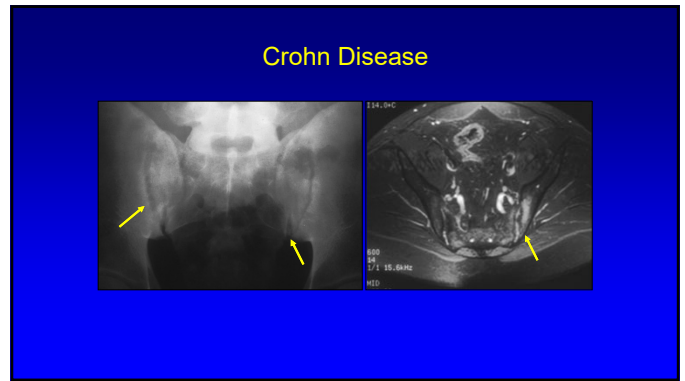
Hemangioma



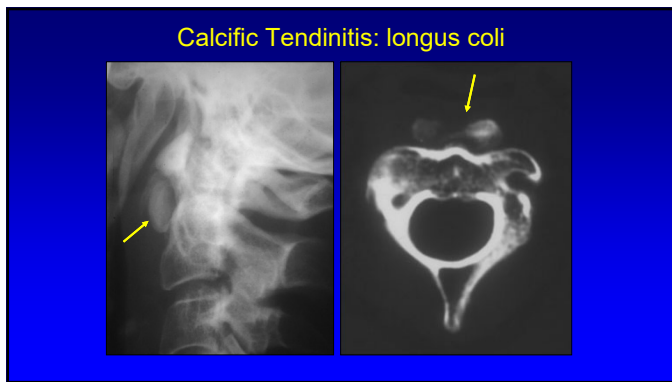
244



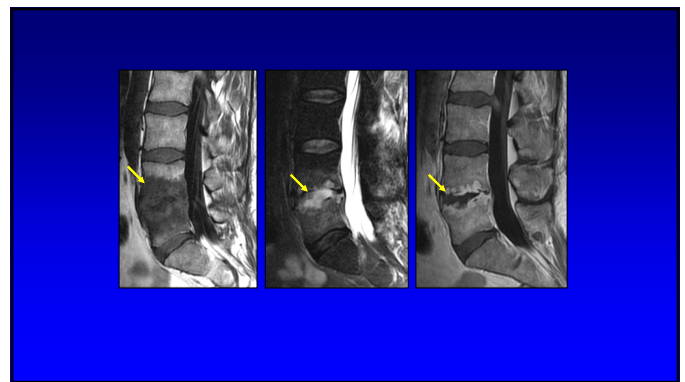
246



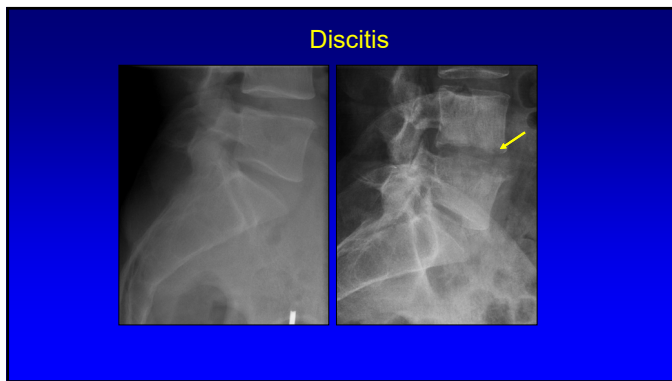
248



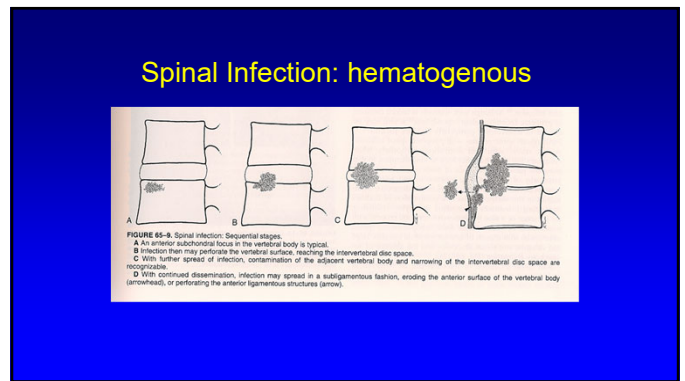
249



251

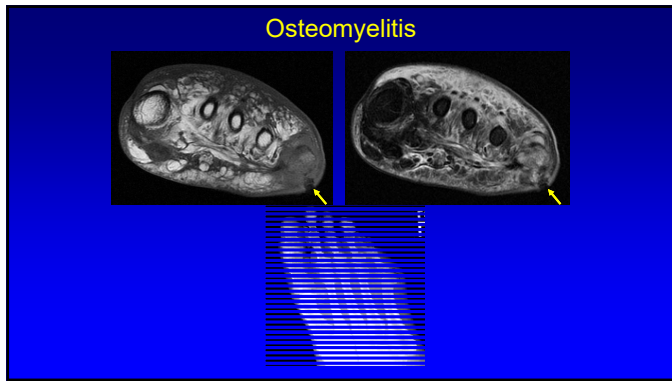


252

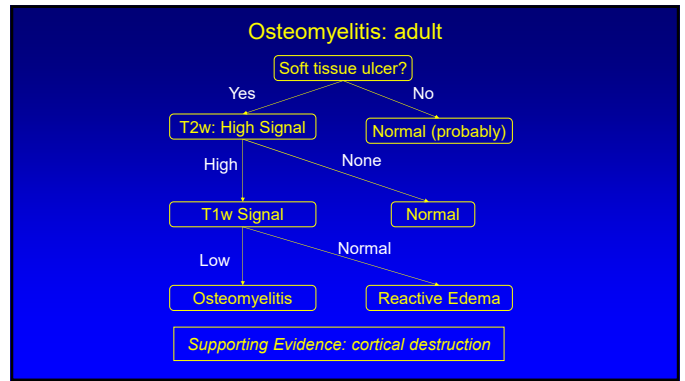


253

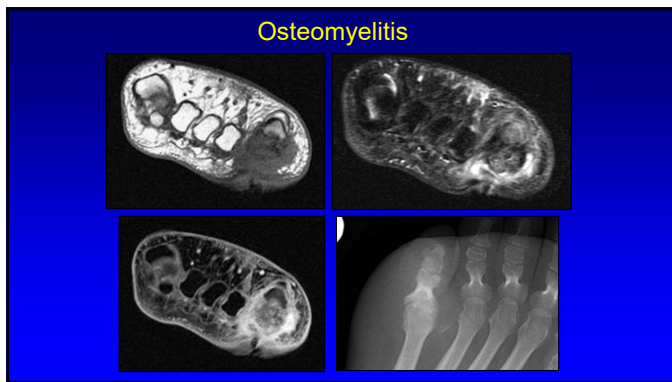




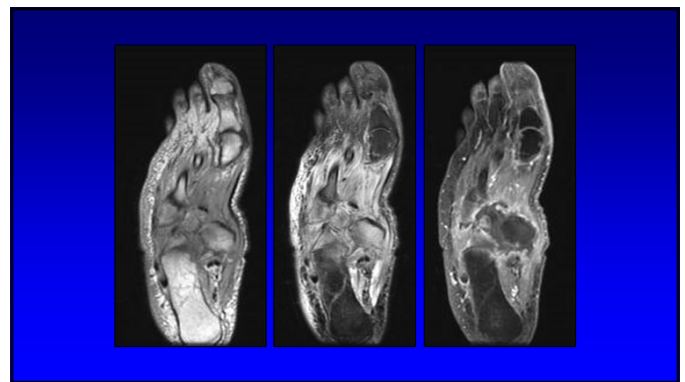
254



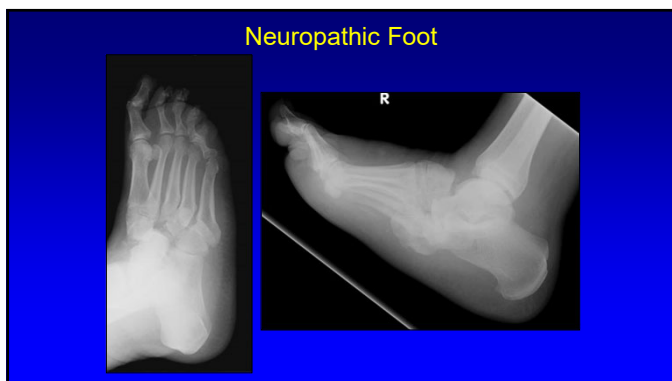
258



259



261



262

Syllabus on line and other educational material:  
[www.jacobsonmskus.com](http://www.jacobsonmskus.com)

Twitter handle: @jjacobsn

268